



Feasibility Study for Envisaged HELP-CAMP Project

“Empowering Communities for Sustainable Livelihoods and Improved Social Protection in Khyber Pakhtunkhwa Province, Pakistan”

Conducted by

**Sustainable Development Policy Institute (SDPI),
Islamabad**

For

**Community Appraisal & Motivation Programme
(CAMP)**

Fareeha Adil | Naimat Ullah Wazir

**Final Report
April 2024**

Table of Contents

<i>Acronyms</i>	2
<i>Executive Summary</i>	3
<i>1.Introduction</i>	7
1.1 Background	7
1.2 Social Protection: A Focus on the Newly Merged Districts of Pakistan	8
1.3 Purpose and Objective of the Feasibility Study	12
1.4 Key Questions	12
1.5 Feasibility Context	15
Economic Environment	15
Political Environment:	Error! Bookmark not defined.
Socio-Cultural Environment.	15
1.6 Data Collection Methodology and Limitations	16
<i>2.Socioeconomic Dynamics and Demography</i>	17
2.1 Socioeconomic Profile of Respondents.....	18
2.2 Collective Action and Awareness	18
2.4 Small Business and Women’s Access to Finance	18
2.5 Micro Insurance.....	19
<i>3.Study Findings: Assessment based on OECD DAC Criteria</i>	20
3.1 Evaluating the Relevance of the Proposed Project	20
3.2 Assessing Project Alignment: Evaluating Coherence	28
3.3 Enhancing Effectiveness: Optimizing Intervention Strategies in Merged Districts	32
3.4 Measuring Impact	38
3.5 Project Sustainability	40
<i>4.Target Groups and Activities Alignment</i>	41
5.1 Trainings Program	42
5.2 Youth Empowerment	44
5.3 Livelihood Generation.....	46
5.4 Social Mobilization and Community level Collective Action.....	48
5.5 Health Insurance	49
<i>Bibliography</i>	52

Acronyms

ADB	Asian Development Bank
BISP	Benazir Income Support Program
CAMP	Community Appraisal and Motivation Program
DAC	Development Assistance Committee
DTI	Digital Technology International
FATA	Federally Administered Tribal Areas
FCR	Frontier Crimes Regulation
FGDs	Focus Group Discussions
GDP	Gross Domestic Product
GIZ	German Agency for International Cooperation
ILO	International Labor Organization
IT	Internet Technology
KP	Khyber Pakhtunkhwa
NFC	National Finance Commission
NGO	Non-government Organization
NMDs	Newly Merged Districts
NOCs	No Objection Certificates
NRSP	National Rural Support Program
OECD	The Organization for Economic Cooperation and Development
PMNHP	The Prime Minister's National Health Program
SSP	Sehat Sahulat Program
UNICEF	United Nations Children's Fund
UNDP	United Nations Development Program
SMART	Specific, Measurable, Achievable, Relevant, and Time-bound
SEM	Structural Equation Modeling

Executive Summary

The Community Appraisal and Motivation Program (CAMP), a national NGO in Pakistan in collaboration with Help- Hilfe zur Selbsthilfe (Germany), presents a comprehensive intervention strategy to tackle the intricate challenges impeding human and social capital in the newly merged districts of Khyber Pakhtunkhwa (KP) province. These districts confront profound socio-economic disparities compounded by historical neglect, conflict, susceptibility to climate change, and developmental deficits. The proposed strategy aims to confront these issues through social mobilization, community-level collective action, livelihood generation initiatives, micro-insurance, and empowerment programs for women and youth. Focusing on areas like Mohmand and Khyber, the strategy seeks to enhance social protection by promoting economic empowerment, resilience, employment opportunities, agricultural productivity, livestock management, youth empowerment—particularly among marginalized women—and improved government service delivery through collective action and social mobilization.

Pakistan grapples with pervasive poverty, inequality, and vulnerability, necessitating a concerted focus on social protection as a key strategy to address these issues. In recent years, the Pakistani government has endeavored to enhance both the breadth and effectiveness of social protection initiatives. However, challenges persist, especially in the newly merged districts of KP, where factors such as limited coverage and insufficient financial resources are exacerbated by prolonged conflict and neglect. Despite efforts to integrate these regions, gaps in social protection coverage and service delivery persist, perpetuating high levels of poverty, unemployment, and food insecurity.

Against this backdrop, the feasibility study underscores the pressing necessity for tailored interventions to confront the distinctive challenges encountered in the merged districts. Emphasizing social protection, livelihood generation, and community empowerment, the proposed strategy aims to bolster resilience and enhance the welfare of vulnerable populations in the region. Nevertheless, enduring dedication from governmental bodies, civil society organizations, and international partners will be indispensable in guaranteeing the efficacy and continuity of these interventions.

The feasibility study adopts a mixed-methods approach, combining quantitative and qualitative methodologies to collect primary data. Structured questionnaires were administered at the household level, focusing on diverse aspects including socio-economic profiles, community dynamics, local governance, natural resource utilization, agriculture, youth orientation, and skill development. Additionally, in-depth interviews were conducted with government officials, supplemented by Focused Group Discussions (FGDs) involving community leaders and social activists. Direct observations during field visits augmented the data collection process. Sampling techniques included cluster and simple random sampling targeting vulnerable households in tehsil Jamrud and Landi Kotal in Khyber district, and tehsil Ekkaghund in Mohmand district. A total of 300 households were randomly selected to ensure representation from both rural and urban areas, encompassing respondents of both genders. Through these methodologies, data collection encompassed various facets such as household socio-economic conditions, government service delivery, livelihood generation, youth empowerment, and agricultural challenges.

This feasibility study was conducted to analyze the proposed interventions, emphasizing problem validation, evidence-based intervention design, and action plan formulation. Through field assessments, the study ensures that interventions align with the needs of the targeted population and are sustainable in the long term. Additionally, the study evaluates the planned project approach according to the Development Assistance Committee (DAC) criteria, with a focus on Relevance, Coherence, Sustainability, and Effectiveness.

Relevance

The proposed interventions address developmental bottlenecks and societal issues in targeted tehsils of Mohmand and Khyber Districts of Khyber Pakhtunkhwa, Pakistan. The proposed interventions are in line with need of the community, as validated by both qualitative and quantitative data and evidence and are aligned with government strategies and policies prioritizing public service delivery, citizen participation, and social protection. The interventions target specific needs, such as livelihood generation, youth empowerment, social mobilization, and micro-insurance health services, tailored to the region's challenges.

Coherence

The planned activities must align with human rights principles, inclusion, and participation, ensuring marginalized groups' involvement, particularly women; moreover, the project need to consider disabled persons in the community. The project needs to emphasize rural areas' needs, integrating marginalized voices and ensuring continuous monitoring to avoid exclusion or discrimination.

Sustainability

To ensure sustainability, the project needs to integrate efforts with local organizations, government bodies, and market forces. It must strengthen community structures, empower marginalized groups, and foster social capital. Additionally, it should incorporate environmentally friendly practices and emphasize local ownership and capacity-building.

Effectiveness

The project's impact logic should be based on interconnectedness of the social protection and the proposed interventions. Ensuring the interconnectedness, the proposed intervention would improve socio-economic conditions and reduce vulnerability. For effective monitoring and measuring social changes, both qualitative and quantitative data collection is essential to measure change and effectiveness. Further, activities should be planned at both community and local government levels to address immediate needs and ensure long-term impact.

Target Groups

The study finds the given target groups for the proposed interventions:

- Social mobilization—for community notables and educated youth; where social mobilization is a broad, structured process where diverse stakeholders—including community members, leaders, NGOs, and government entities—unite to address societal issues and achieve collective goals through extensive networks and resources (Ip et al., 2020). It involves engaging individuals to challenge and transform existing social norms and inequalities that impede progress (Minckas et al., 2020).
- Collective action—for youth, elders, and social activists; where collective community action is a grassroots initiative where community members collaborate directly and voluntarily to address local concerns or objectives. This action hinges on pooling resources and coordinating efforts to effectuate change, driven by a unified interest among participants (Shrestha & McManus, 2007); its effectiveness often depends on the group's ability to cooperate and the nature of the task at hand (Khwaja, 2002).
- Agriculture—for farmers, and landowners.
- Livestock—for marginalized households females.
- Youth empowerment—for educated, business-oriented youth, and disabled.
- Micro health insurance awareness—for households not insured in rural areas.

Recommendations

The study recommends the establishment of new local community organizations comprising of local notables and educated youth, along with pertinent training. Currently local community organizations are mostly dysfunctional or do not exist. The established local government bodies at village council level are dysfunctional due to lack of resources, authority, and awareness. Therefore, it is important to establish new committees comprising of representatives from each village and train them to work closely with the government at tehsil, district, and provincial level. Well-organized and trained local committees can potentially work with local government to foster government services. Such committees can also help marginalized households through different channels to meet their needs occasionally and in case of emergencies. Awareness programs should be initiated at village level for fostering collective action and raising awareness about the citizen rights and government constitutional responsibilities. To empower youth, skill development programs should be implemented, covering areas such as e-commerce, mobile money business and repairing, electrical work, natural resource extraction, and crafting, nursing trainings for females. In the agricultural sector, on ground interventions such as land leveling, construction of irrigation channels, provision of quality seeds, and adoption of solar technology for irrigation purposes¹ should be undertaken, alongside providing agriculture-related training for farmers. Livestock management training, and provision should be given to marginalized females. Additionally, awareness programs and facilitation of health insurance enrollment should be conducted for non-insured households.

The following specific recommendations are derived from both qualitative and quantitative data analysis.

Social Mobilization and Community-Level Collective Action: For social mobilization and collective action, the study suggests establishing village-level community organizations to collaborate with local government for inclusive economic development and judiciary system establishment. Training for committees on management, coordination, and advocacy for government services and infrastructure development is recommended. Creating awareness among communities about their rights and prioritizing local needs through collective action is crucial. Ensuring representation of marginalized members within committees to address community challenges comprehensively is also highlighted.

Training Program: The study recommends establishing local community organizations and Tehsil-level committees to empower communities through management training and awareness about citizen rights and government cooperation. Tailored training initiatives for male and female youth are proposed, focusing on online business, vocational skills, and financial access support. Livestock and poultry training for marginalized households should be provided, ensuring vaccination and suitability to local climate. It is suggested to utilize local technical centers for male training and establish dedicated centers for female training in tehsils Jamrud, Landi Kotal and Tehsil Ekkghund.

Youth Empowerment: Youth empowerment initiatives are stratified by gender, taking into account the nuanced dynamics of local demographics and cultural norms. Tailored programs for male and female cohorts aim to address distinct needs and aspirations, fostering inclusivity and relevance within the community context. This gender-sensitive approach ensures that empowerment efforts resonate effectively with the diverse realities of young people in the target area, promoting sustainable and meaningful outcomes for all.

Youth Empowerment (Male): To empower male youth, the study advocates offering short courses in freelancing and online business for entrepreneurial endeavors. Financial support for small and online

¹ Solarization of tube-wells in rural villages where irrigation rely on rainfall, though tube-wells are available but dysfunctional due to lack of electricity.

businesses is recommended, addressing the needs of 37% of the population seeking support (this is not part of the project scope). Technical and vocational skills enhancement through targeted training programs is also suggested.

Youth Empowerment (Female): Initiatives tailored for female youth should focus on poultry farming, sewing, and agriculture. Financial support for small and online businesses could also benefit female entrepreneurs. Technical and vocational skills enhancement through targeted training programs is recommended to empower female youth economically.

Livelihood Generation: In terms of livelihood generation, the study emphasizes developing agricultural skills and infrastructure, including land leveling and provision of quality seeds and irrigation channels. Promoting livestock and poultry farming is recommended, offering training in management, vaccination, and disease prevention. Establishing small-scale industries for processing natural resources and agriculture products, benefiting marginalized households, is advised. Prioritizing solarization of tube wells to increase agricultural productivity and address water scarcity is also recommended.

Health Insurance: In terms of health insurance, the study proposes expanding awareness through targeted campaigns and community outreach initiatives. Advocating for the expansion of health insurance services to cover target districts and facilitating linkages between deserving households and government departments are recommended. Collaboration with BISP offices at district levels to effectively reach the most deserving households for micro-health insurance is advised.

1. Introduction

1.1 Background

Community Appraisal and Motivation Programme (CAMP) is registered in May 2002 as a non-government, not-for-profit organisation in Pakistan, under the Societies Registration Act (Registration No. 192/5/2946). CAMP's main objective is to promote an enabling environment where people have equitable access to quality services, including health, water and sanitation, improved infrastructure and livelihood; and are aware of their basic human rights.

CAMP) has proposed an intervention strategy to tackle the complex challenges affecting human and social capital in Khyber Pakhtunkhwa's newly merged districts of Pakistan. These districts face social protection issues, with the broader province contributing significantly to Pakistan's mining and GDP², yet struggling with poor infrastructure, limited services, scarce employment opportunities, and challenges in education, healthcare, and social protection. A significant portion of the population still lacks access to necessities such as sanitation, electricity, and clean drinking water, resulting in low district rankings for crucial human development metrics (Asfaw et al., 2019). The 2022 floods exacerbated these issues, impacting livelihoods, agriculture, and infrastructure. Longstanding law and order problems have further hindered development and investment (Abdul et al., 2021).

Within KP districts, the newly merged district (NMDs), previously known as the Federally Administered Tribal Areas (FATA), remains underdeveloped for several reasons. Historically, FATA's strategic location along the Pakistan-Afghanistan border made it pivotal in global conflicts, such as during the Soviet-Afghan War and the US-led invasion of Afghanistan, serving as a sanctuary for various non-state actors. Since the implementation of the Frontier Crimes Regulation (FCR) in 1901, the region was governed under archaic legal and administrative systems that largely excluded modern legal rights like the right to appeal, legal representation, and the right to present evidence, also enabling collective punishment. These governance systems and the region's geopolitical significance have left the NMDs underdeveloped, making them highly susceptible to external shocks, including terrorism and natural disasters, thereby stalling human capital development.

In these NMDs, persistent challenges in governance, education, health, social protection, and livelihood generation contribute to their ranking as some of Pakistan's poorest areas. The prolonged war on terror has led to significant displacement, disrupted local businesses, heightened socio-economic insecurities, and caused extensive damage to agriculture, irrigation systems, livestock, and shelters.³ Consequently, an estimated 23 percent of the population in these seven districts faces crisis conditions, including emergency situations and food insecurity.⁴

The NMDs, specifically Mohmand and Khyber where the project is targeted, are susceptible to natural disasters. This vulnerability poses a substantial risk to human capital development and social protection in these areas. Recent events, such as the deadly landslides in Safi tehsil of Mohmand district, where victims had no insurance coverage, underscore this vulnerability. These disasters not only claim lives but also disrupt livelihoods and income sources of already vulnerable households. The Peshawar division, adjacent to the newly merged districts, regularly encounters floods and storms. These natural disasters result in far-

² Agricultural Worker in Khyber Pakhtunkhwa: <https://hrcep-web.org/hrcepweb/wp-content/uploads/2020/09/2023-Agricultural-workers-in-Khyber-Pakhtunkhwa.pdf>

³ ibid

⁴ FOOD AND AGRICULTURE ORGANIZATION OF THE UNITED NATIONS Rome, 2022: <https://www.fao.org/3/cb9471en/cb9471en.pdf>

reaching consequences, severely affecting individuals and families in the Peshawar division as well as in neighboring NMDs. The Mohmand and Khyber districts, which share borders with the Peshawar division, are particularly impacted by these events. Additionally, the ongoing conflict and terrorism in these areas further disrupt the economy, social dynamics, and infrastructure, compounding the challenges faced by these communities.

In the merged districts, entrenched tribal traditions further complicate efforts in social mobilization, livelihood enhancement, financial stability for households, and community collective action. These practices notably impact the empowerment of women and youth. Addressing these challenges requires comprehensive policies such as involving the civil administration to work closely with the community and negotiating with the tribal leadership. Given that the civil administration traditionally has a history of working with the maliks or local leaders, they can manage the expectations of the tribal leadership while ensuring that the community's interests are not compromised. Additionally, leveraging the network of local community organizations, that CAMP intends to establish/revise, can enhance community engagement and trust, fostering more effective collaboration in implementing these policies and ensuring that interventions are culturally sensitive and locally driven.

To this end, CAMP's strategy focuses on improving social mobilization, bolstering community action, promoting livelihood opportunities, awareness raising and generating demands micro-insurance, and empowering women and youth. The proposed interventions have the potential to achieve economic and youth empowerment, resilience, decent work, and poverty reduction in the area, aligning with the Sustainable Development Goals agenda for 2030. Thorough impact assessments of these interventions are necessary to evaluate their efficacy. A systematic process of problem identification, appropriate intervention, and rigorous evaluation holds the potential to significantly mitigate, if not eliminate, the vulnerabilities faced by the underprivileged segments of the two districts in the face of climate change and man-made conflicts.

Grounded in extensive research framework, this feasibility study proposes interventions aiming to foster economic and youth empowerment, strengthen community resilience, provide opportunities for decent work, and alleviate poverty, aligning with the 2030 Sustainable Development Goals. To assess the effectiveness of the proposed interventions, thorough impact evaluations are crucial. A systematic approach encompassing problem identification, tailored interventions, and rigorous impact evaluation⁵ could greatly reduce, if not eradicate, the vulnerabilities of marginalized groups in these two target districts amidst climate change and human-induced conflicts.

1.2 Social Protection: A Focus on the Newly Merged Districts of Pakistan

In developed economies, social policy measures are key to safeguarding individual well-being, contrasting with the emerging role of social protection in the development policies of developing economies (Alcock, Daly & Griggs, 2014; Barrientos, 2011). Definitions of social protection vary, reflecting different contexts and dimensions. The World Bank (2007)⁶ views it as ensuring a minimum income for the vulnerable, aiding them to sustain income and escape poverty. Similarly, the Asian Development Bank (2003)⁷ sees it as aimed

⁵ Details given in section of 'Measuring Change'

⁶ Social Protection in Pakistan Managing Household Risks and Vulnerability
<https://documents1.worldbank.org/curated/en/493331468059090991/pdf/354720PK.pdf>

⁷ Social Protection: <https://www.adb.org/sites/default/files/institutional-document/32100/social-protection.pdf>

at poverty alleviation and reducing vulnerability by mitigating risks and enhancing capacity to manage income disruptions or losses.

In developing economies, effective implementation of social protection policies, coupled with sufficient fiscal space, can significantly contribute to the well-being of vulnerable segments of society, particularly in countries like Pakistan. In Pakistan, social protection involves diverse stakeholders - government, commercial sector, civil society, and international organizations. Acknowledging the country's significant poverty, inequality, and vulnerability, social protection is pivotal in tackling these issues. Consequently, the Pakistani government has recently intensified efforts to broaden and improve social protection measures.

Although Pakistan has ratified three International Labor Organization (ILO) conventions⁸ on social security, challenges in implementation persist. This is partly because social protection has not been a priority in development planning, especially in KP. Nonetheless, the creation and upkeep of an inclusive social protection system serving all societal segments depends on the effective application of these conventions.

Despite financial constraints and significant debt, the government of Pakistan has taken steps to combat poverty, improve healthcare and education, and establish safety nets for natural disasters. A key example is the Benazir Income Support Program (BISP)⁹, initiated in 2008, providing nationwide cash transfers to vulnerable families. In healthcare, initiatives like the Prime Minister's National Health Program (PMNHP)¹⁰ and the Sehat Sahulat Program (SSP) offer health insurance to low-income citizens. Moreover, to foster universal education access, reforms and the National Education Policy have been introduced to increase educational inclusivity and accessibility.

The following additional social protection programs in Pakistan aim to alleviate poverty and offer assistance to vulnerable societal segments:

1. Ehsaas Program
2. Waseela-e-Taleem Program
3. Zakat and Ushr Program
4. National Socio-Economic Registry (NSER) – launched in 2010 for the registration of eligible individuals for BISP program.
5. Punjab Ehsaas Program
6. Sindh Social Protection Strategy
7. Khyber Pakhtunkhwa Ehsaas Program
8. Prime Minister National Health Program: A Cost Comparison Analysis

The implementation of social protection programs varies across provinces and throughout the country. After the 18th constitutional amendment passed in the year 2010, provincial governments are now

⁸ Pakistan has ratified three conventions on the theme of social security, two in the pre-partition era and one in the post-partition era. The legislative mechanism to implement the provisions of these Conventions comes from Article 38(c) and 38(d) of the Constitution which requires the state to “provide for all persons employed in the service of Pakistan or otherwise, social security by compulsory social insurance or other means” and “provide necessities of life, such as food, clothing, housing, education, and medical relief, for all such citizens.

⁹ Impact Evaluation of World Bank’s Strategy of Conditional Cash Transfer to Promote Uptake of Health and Nutrition Services: Study Compilation Report. <https://documents.worldbank.org/en/publication/documents-reports/documentdetail/099430406292212035/p1651380a0e575010a613031eabe43043c>
<https://documents.worldbank.org/en/publication/documents-reports/documentdetail/099430406292212035/p1651380a0e575010a613031eabe43043c>

¹⁰ Prime Minister National Health Program: a Cost Comparison Analysis <https://pjph.org/index.php/pjph/article/view/102>

responsible for framing social protection policies in their respective provinces. Each province has their own limitations of resources, outreach, accountability, and capacities to deliver services. These limitation leads to regional disparities and inequalities.¹¹ In the merged districts of Khyber Pakhtunkhwa province, poverty, inequalities, and local disparities are the major challenges for the provincial government¹². In this regard, the interventions can potentially address inequalities at micro level within the targeted districts and improve the social protection profile of the targeted districts in Khyber Pakhtunkhwa province.

The government of Punjab, for instance, has progressed notably in creating a holistic social protection framework. The Punjab Ehsaas Program, with income support, education stipends, and healthcare subsidies, exemplifies this.¹³ Similarly, Sindh has launched the Sindh Social Protection Strategy,¹⁴ focusing on social assistance, education, and healthcare for its vulnerable populations.

In Baluchistan, social protection measures are less advanced than in other provinces, but there are ongoing efforts to improve education, healthcare, and employment access through specific interventions. In KP, initiatives like the KP Ehsaas Program provide cash transfers, scholarships, and healthcare support to marginalized groups. Additionally, programs such as the Sehat Sahulat Program and the KP Education Sector Plan aim to enhance access to education and healthcare services.¹⁵

Despite social protection programs in Pakistan, many remain vulnerable to poverty and food insecurity, with 24.3% below the poverty line (World Bank, 2021) and 17% food insecure (PIDE, 2020).¹⁶ Over the last four years, Pakistan has experienced significant inflation, exceeding 30% post mid-2022, with experts estimating an increase in the poverty ratio. Literature points to key challenges affecting these programs' efficacy. Financial constraints, characterized by limited budgets, insufficient fiscal space, and dependency on external funds, are major issues, restricting program expansion (UNDP, 2019; Asian Development Bank, 2022).¹⁷ Challenges in reaching deserving populations are also notable, exacerbated by documentation issues, exclusion errors, and a lack of awareness among beneficiaries. Furthermore, administrative inefficiencies, poor infrastructure, and limited institutional capacity, particularly at the provincial level, hinder effective service delivery in remote and marginalized areas.¹⁸

The newly merged districts grapple with distinct challenges due to prolonged conflict, underdevelopment, natural disasters and historical neglect. Issues like limited access to healthcare, education, and clean water prevail, stemming from insufficient infrastructure and fragile governance (ADB, 2022). These districts also face substantial socio-economic disparities compared to the national average, evident in elevated poverty, unemployment, and food insecurity (UNDP, 2019).

In NMDs, social protection faces acute challenges, including limited coverage and financial resources. Despite integration efforts into wider development plans, significant gaps in social protection coverage and

¹¹ Regional: Enhancing ADB's Support for Social Protection to Achieve the Sustainable Development Goals Pakistan: Social Protection Indicator <https://www.adb.org/sites/default/files/project-documents/52012/52012-001-tacr-en.pdf>

¹² KP govt. urged to establish social protection authority to fight poverty https://sdpi.org/kp-govt-urged-to-establish-social-protection-authority-to-fight-poverty/news_detail

¹³ <https://pspa.punjab.gov.pk/system/files/Punjab%20Social%20Protection%20policy%202022.pdf>

¹⁴ Sindh Social Protection Policy Note <https://documents1.worldbank.org/curated/en/941321557209507700/pdf/Sindh-Social-Protection-Policy-Note.pdf>

¹⁵ The multi-sectoral and multi-stakeholder Ehsaas Strategy: <https://faolex.fao.org/docs/pdf/pak202244.pdf>

¹⁶ PIDE Policy Viewpoint: <https://file.pide.org.pk/pdfpideresearch/pv-23-unconditional-cash-transfer-and-poverty-alleviation-in-pakistan-bisps-impact-on-households-socioeconomic-wellbeing.pdf>

¹⁷ Islamic Republic of Pakistan: Provincial Strategy for Inclusive and Sustainable Urban Growth (Cofinanced by the Japan Fund for Poverty Reduction) https://www.adb.org/sites/default/files/project-documents/49050/49050-001-tacr-en_4.pdf

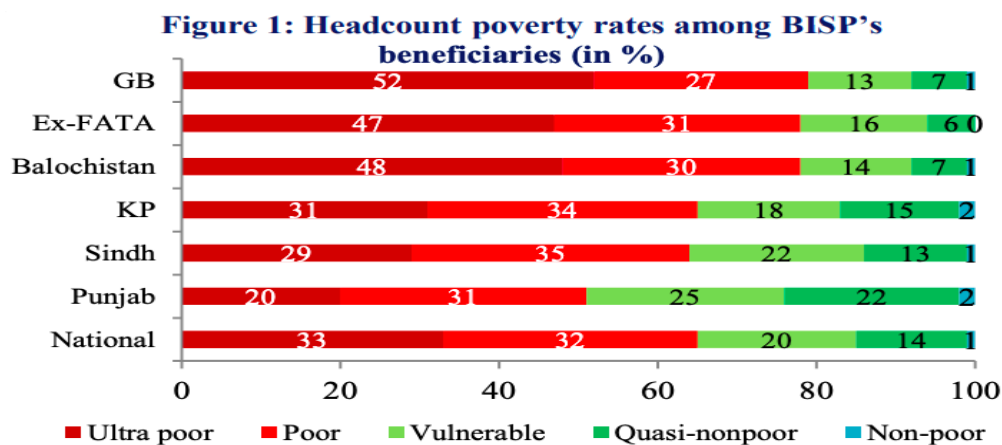
¹⁸ State of Social Protection in Pakistan. <https://www.sprc.org.pk/wp-content/uploads/2020/12/State-of-Social-Protection-in-Pakistan-2020.pdf>

service delivery persist.¹⁹ The situation is compounded as these districts have not received their due share in the National Finance Commission (NFC) Award²⁰, restricting the KP government's ability to initiate development at an optimal pace. This shortfall, along with weak safety nets, inadequate institutional capacity, and ongoing security concerns, hampers the effective implementation of social protection programs. Consequently, as reported by the 2018 National Nutrition Survey, the prevalence of stunting in these districts stands at 48.3%, higher than the national average of 40.2%.²¹

Additionally, beneficiaries of the BISP social protection program remain impoverished and vulnerable, as indicated by the headcount poverty rate. PIDE's impact evaluations show that even after eight years of BISP implementation, beneficiaries at the national level continue to experience poverty and vulnerability, as demonstrated in Figure 1.²²

In the former FATA, now NMDs, Figure-1 indicates that 47% of social protection program beneficiaries remain in ultra-poverty, while 31% are categorized as poor, totaling 78% still impoverished despite receiving social protection benefits. Additionally, 16% are considered vulnerable. These statistics suggest that social protection programs in Pakistan are currently less effective in providing adequate protection.

CAMP and HELP's project aims to establish a social protection floor in two selected districts of the NMDs in KP. The goal is to provide essential social-coverage, including access to micro-insurance for household health security. The project seeks to develop a broad social protection policy through a multidimensional strategy to expand outreach. Key elements of the project include: 1) Conducting a thorough social protection analysis in the NMDs to pinpoint service gaps, aiding in policy formulation; 2) Developing and pilot testing a social protection model in the selected districts; and 3) Creating coordination forums to improve synergy and collaboration between public sector agencies and development partners involved in delivering social protection services.



Source: OPM Impact Evaluation Report, 2019.

¹⁹ Tribal Decade Strategy 2020-2030 <file:///Users/naimatwazir/Downloads/Tribal%20Decade%20Strategy.pdf>

²⁰ The NFC Award, Pakistan's constitutional method for distributing finances between federal and provincial governments, is periodically revised. Allocation criteria include population, poverty levels, revenue contribution, and developmental lag. In 2018, the federal government pledged an annual PKR 100 billion for the NMDs. However, to date, less than one-third of this amount has been released annually.

²¹ Ehsaas Strategy: <https://faolex.fao.org/docs/pdf/pak202244.pdf>

²² PIDE Policy View Point <https://file.pide.org.pk/pdfpideresearch/pv-23-unconditional-cash-transfer-and-poverty-alleviation-in-pakistan-bisps-impact-on-households-socioeconomic-wellbeing.pdf>

1.3 Purpose and Objective of the Feasibility Study

The purpose of the study is to analyze the socio-economic feasibility of the proposed intervention strategy for livelihood generation and social protection in the targeted districts of Mohmand and Khyber of KP province.

To achieve this, the study focuses on the following specific objectives:

1. The Feasibility Study validated identified issues and aligned interventions with factual insights by gathering primary data through structured household questionnaires, conducting Focus Group Discussions (FGDs), and undertaking key stakeholder interviews. This approach ensured that the interventions were firmly grounded in evidence.
2. Conducted a feasibility study based on OECD DAC criteria, providing thorough evidence demonstrating the proposed strategy's relevance, coherence, effectiveness, efficiency, impactfulness, and sustainability.
3. The Feasibility Study evaluated local potentials, existing structures (including institutions, networks, umbrella organizations, and others), and social mechanisms to determine what could be built upon and identified gaps that needed to be addressed. Also assessed opportunities for creating synergies.
4. The Feasibility Study assessed which relevant professional, administrative, and political competencies needed further development at the local partner's organizational level to fulfill its mandate and achieve organizational goals.
5. The Feasibility Study proposed an action plan for youth empowerment, addressed agricultural sector requirements, promoted collective action, and facilitated social mobilization to enhance social protection and livelihood generation initiatives.

1.4 Key Questions

Stakeholder mapping:

- Which local potentials, existing structures (institutions, networks, umbrella organizations and others) and social mechanisms can be built upon? What are gaps that need to be addressed?
- Where can synergies be created?

Context:

- What is the initial situation the project will take place in including political and socio-economic factors?
- Which sociocultural barriers exist with regard to the project approach and how can these be overcome?
- Which negative consequences and effects could project measures or sub-objectives bring about? To what extent can this be considered in the project (concept) – e.g. “do no harm” approach, conflict-sensitive effectiveness monitoring, etc.?
- Which risks (personnel risks for those implementing the project, institutional and reputation risks, context risks) exist when implementing the project? How can these be minimized?

Target Group:

- How homogeneous or heterogeneous is the target group in terms of factors such as gender, ethnicity, age, sexual orientation, language, capacities and to what extent is this reflected in the intervention?
- To what extent does the project address the needs articulated by the target group and overarching development goals of national or global policy?
- How can the ownership of the target group be included and strengthened (e.g. can they contribute a certain amount of funds or other services)?

Capacity Building of the local partner (if applicable):

- Which relevant professional, administrative and political competences should be further developed at local partner's organizational level in order to fulfil its mandate and organizational goals?

OECD DAC criteria

Relevance:

- Will the planned project approach address an important development problem or a key developmental bottleneck in the region?
- Are the focus, prioritization and objectives of the planned project aligned with the target groups life situations and are clearly defined?
- To what extent do the intervention objectives and design adequately consider the specific needs of the target group and structural obstacles in the project region, of institution and policy programs?
- What needs to be considered by the program to be conflict-sensitive (Do-No-Harm principle)?
➔ Please make adequate recommendations in case shortcomings are identified.
- Which change is to be brought about by the project after it has come to an end?

Coherence:

- How coherent are the planned activities with human rights principles (inclusion, participation), conventions and relevant standards/guidelines?
- To what extent will use be made of synergy effects or potentials for complementation with measures undertaken by other organizations or programs? Where can be potential overlaps identified with other interventions that are currently being implemented or are envisaged to be implemented in the target region?
- To what extent does the intervention add value and avoid duplication?

Effectiveness

- Which **impact logic/impact hypothesis** should the project be based on?
- What form could an effective **results matrix** take, including suitable and reliable SMART indicators (

- How are changes measured? Which indicators are more suitable? Who should monitor the effects when, how and at which intervals (**effectiveness monitoring**)?
- Are the cause-effect relations in the impact matrix (including assumptions) plausible? What negative effects could occur?
- Is the chosen methodological approach and the planned measures appropriate to the context and sufficient to achieve the project objective? Are alternatives necessary?
- Should activities be planned at the meso and/or macro level (multilevel approach) in order to increase sustainability?
- Which measures does the study recommend for achieving the objective?

Efficiency

- Is the overall budget sufficient to achieve the project's objective? Which structural and personnel resources are needed?
- Can the planned measures be implemented with the envisaged funds in the envisaged time period and can the desired effects be achieved efficiently (cost-benefit), economically and using as few resources as possible?

Impact

- What special contribution does the project objective (outcome) make to the overall objective (impact)?
- To what extent is the planned project structure-building, model-like and broadly effective? On which levels will norms or structures be changed?

Sustainability

- How can the sustainability of the results and impacts be ensured and strengthened (structurally, economically, socially, ecologically)?
- What long-term capacities are built up in the target group to be able to continue the implemented measures independently?
- What positive changes (role behavior, mechanisms, networks and others) benefit civil society in the long term?
- Which role/responsibility is assumed by state and/or civil society structures? To what extent can local potential, structures and procedures be built on? Which measures and instruments are most suitable for harnessing and strengthening local initiative, participation and capacities?

Based on above findings, the feasibility study proposes clear recommendations in order to improve the overall project design.

1.5. Feasibility Context

Economic Environment

Pakistan's economy faces complex challenges despite significant economic growth potential. The country is ranked 5th populous economy with significant population growth. The young population is increasing at a higher rate while the country is face challenges such as un-employment, food insecurity, political instability, and inclusive economic growth. Agriculture remains a key contributory sector, employing 40% labor force and contributing 18% to the country GDP. The agriculture productivity is hindered by factors such as limited land issue for agriculture, poor irrigation, and outdated technology. Similarly, industrial sector contributes 20% which is below the potentials. Services sectors such as information technology and telecommunication are emerging sectors of Pakistan economy²³.

In Pakistan, the political environment most often remains uncertain thereby affecting business and trade both at domestic and national level. However, the current political environment is neither holistic nor ideal, and less likely to affect developmental project adversely in the country. On district level, the political environment is less problematic than at national and ruling level. specifically, in the merged districts, politicians and local notables are equivalently influential. They both have say and influence over their respective constituencies. The backing of both elected representative and local traditional notables is important for the project implantations. Notably, the elected representatives from the district Mohmand and Khyber belong to the ruling party in KP assembly and the influence of the opposition parties in the districts is less notable. The absence of political dispute and revelry at district level provide feasible implementation and execution for developmental project. In addition, elected officials include the District Nazim, who heads the District Council, and Tehsil Nazims who lead councils at the sub-district level.

The political environment of the districts needs careful engagement. The interest of both tiibal elders and elected representatives may have different political interests but it would not negatively affect the benefits for the local community, therefore, the involvement of the traditional and elected stakeholders needs to be considered in the process of the project development and implementation. Their perspective related to project benefits for the local population, employment opportunities, livelihood generation, collective action for the improved government services need to be considered. Such collaboration and consultation will ensure that that the project remains beneficial and is smoothly implemented.

Socio-Cultural Environment.

Pakistan has rich and diverse socio-cultural aspects with varied ethnicities and religious traditions. With Islam as the dominant religion, embraced by over 96% of the population, it profoundly influences cultural norms and traditions, shaping the everyday lives of citizens. Culturally, Pakistan maintains strong family ties within a predominantly patriarchal structure that governs most households. However, the rapid globalization and urbanization has introduced social changes adopted by the youth²⁴.

Pashtun culture dominates in Khyber Pakhtunkhwa province, with a strong emphasis on tribal traditions, honor, and hospitality. Pashtun traditions play a significant role in the social life such

²³ World Bank Indicators : https://databank.worldbank.org/country/PAK/556d8fa6/Popular_countries

²⁴ Encyclopedia Britannica: Culture of Pakistan: <https://www.britannica.com/place/Pakistan/Daily-life-and-social-customs>

as resolving dispute through local elders—by the Jirga. In the past decades, the tribal area such districts Mohmand and Khyber were considered more conservative as compared to other districts of Pakistan in terms of girls’ education. Khyber District, particularly Landi Kotal, exhibits a vibrant social scene influenced by its role in trading. While Pashtun traditions have not historically opposed girls' education and empowerment, contemporary challenges persist due to factors such as limited educational opportunities, inadequate social and economic prospects, lack of awareness, decades of religiously induced conflict, and overall regional backwardness.

Considering the socio-cultural aspect during the implementation of the proposed project is important and significant. Secondly, a situation should be considered where local influence pressurizes selection site for the project or expect personal gains, such a situation can be dealt through local civil administration. The civil administration has been working, historically, with local notables and influential and can be dealt with in such a way that it does not compromise the benefits for the local community.

1.6 Data Collection Methodology and Limitations

The study utilizes a comprehensive primary data collection approach, combining quantitative and qualitative methods. Data from households is gathered through structured questionnaires at Tehsil and Union/Village Council levels, examining various socio-economic dynamics, community organizations, collective action, government service delivery, natural resource utilization, agricultural issues, and youth development through vocational training. Additionally, a thorough literature review is conducted to contextualize findings within existing research. The survey is implemented with local facilitators and enumerators.

The methodology involved collecting household data through structured questionnaires in Khyber and Mohmand, followed by FGDs with notable elders, Mosque Imams, union councilors, and social activists. Separate FGDs were conducted with male and female youth from diverse backgrounds. In-depth interviews were held with government officials, including political administrators, agriculture officers, BISP officials, livestock, and veterinary officials. Personal observations were also noted during field visits in the targeted Tehsils.

Sampling of Target Population: Cluster and simple random sampling techniques are employed to select vulnerable households in the selected Tehsils of Khyber and Mohmand districts. Primary data on economic conditions and resources are gathered through structured questionnaires administered door-to-door in both districts.

Scope and Size: The study focuses on vulnerable households in sub-divisions Jamrud and Landi-Kotal of Khyber district and Ekkaghund of Mohmand, with 300 households randomly selected—150 from Ekkaghund and 150 from Jamrud and Landi Kota with + 94 % accuracy. Selection extends to the union/village council level, ensuring representation of rural and urban characteristics and both genders.

Sample Size Distribution

Target Districts	Khyber	Mohmand	Total
Total population as per census 2017	984,246	474,345 (100% rural)	1,458,591

Target Districts	Khyber	Mohmand	Total
	(with 9.90% population live in urban areas)		
Total Sample Size as per standard statistical formula @ 94% confidence of internal and 6% margin of error	<u>150</u>	<u>150</u>	<u>300</u>

Note: Sample will be further disaggregated by tehsil, rural/urban, gender (men, women), etc. (where possible and applicable considering cultural barriers).

Survey Instruments and FGDs: Structured questionnaires gather data on household socio-economic conditions, government service delivery, livelihoods, natural resources, small businesses, finance access, and micro health insurance. FGDs with local notables explore government delivery, social mobilization, livelihoods, and collective action. Separate FGDs with male and female youth discuss empowerment, education, small businesses, and vocational training. Key interviews with local administrators gather information on poverty identification, service delivery, agriculture, and feasibility. Direct observations supplement field data.

Gender Inclusivity: An equal gender ratio was maintained during data collection, including structured questionnaire interviews, FGDs with both male and female youth, and interviews with community notables and elders. Female interviewers were engaged to conduct interviews with female participants, considering cultural norms in the targeted area.

Research Limitations: While the methodology employed a robust combination of quantitative and qualitative methods, several limitations should be acknowledged. Firstly, the reliance on structured questionnaires and FGDs may limit the depth of insight into complex socio-economic dynamics and community perspectives. Secondly, the sample size of 300 households, though statistically determined, may not fully capture the diversity of experiences within the targeted districts, particularly considering the large population sizes and cultural variations. Additionally, the use of local facilitators and enumerators, while beneficial for access and rapport-building, could introduce bias or interpretation errors in data collection and analysis.

Furthermore, the study's focus on specific Tehsils (sub-divisions) within Khyber and Mohmand districts may restrict generalizability to other areas or contexts within the regions under study. Finally, while efforts were made to disaggregate data by various demographics, such as gender and rural/urban classification, cultural barriers may have hindered comprehensive representation. These limitations underscore the need for cautious interpretation and consideration of the study's findings.

2. Socioeconomic Dynamics and Demography

This study focuses on assessing the feasibility of livelihood project in Khyber and Mohmand districts, employing structured questionnaires to gather demographic, economic, agricultural, and health-related data, including inquiries pertaining to both male and female youth. The varied household compositions, economic contexts, and health concerns revealed through data analysis provide a holistic understanding of

community dynamics, identifying issues and insights for targeted interventions. This ensures that livelihood projects are not only feasible but also tailored to meet the specific needs of communities in these districts.

2.1 Socioeconomic Profile of Respondents

The socio-demographic data analysis of respondents across districts and tehsils is presented graphically and in tabulation (details in Annexure A1), offering insights into demographic and project-related aspects. Cross tabulation of gender and marital status reveals patterns among the 321 respondents, including single, married, and widowed individuals. Figures on education levels, family sizes, income distribution, and major occupations provide a nuanced understanding of the surveyed population's socioeconomic landscape, enriching the feasibility study's analysis. Additionally, figures displaying various small businesses operated by surveyed families highlight their diverse contributions to the local economy across multiple sectors and services.

2.2 Collective Action and Awareness

Data analysis reveals insights into infrastructure availability, deficiencies, and community preferences, detailed in Annexure A2 through figures and tabulations. While access to services such as electricity exists, concerns remain regarding availability and security. Moreover, a notable portion of respondents highlights the necessity for enhanced collaboration between local committees/organizations and the government to effectively address local concerns.

2.3 Agriculture and Natural Resources

Information pertaining to the agriculture sector and natural resources within the targeted community is presented, encompassing key issues and concerns related to agricultural activities. Analysis of figures and graphs in Annexure A3 indicates a substantial engagement of households in agricultural pursuits, underscoring the sector's significance in their livelihoods. The examination delves into community perceptions and practices regarding land ownership and cultivation, irrigation sources, adoption of modern agricultural technologies, access to quality seeds and fertilizers, and the presence of relevant government programs tailored to agriculture within the region.

The data highlights the crucial role of the agriculture sector in sustaining the livelihoods of the targeted community, with a significant proportion actively involved in agricultural activities. Key concerns identified include limited land ownership, varied irrigation methods, predominantly subsistence-oriented crop utilization, and insufficient adoption of modern agricultural technologies and quality seeds. Recommendations for intervention include prioritizing access to modern technologies, improving seed availability, and implementing comprehensive agricultural training programs to bolster productivity and sustainability within the community.

2.4 Small Business and Women's Access to Finance

This section explores the diverse array of small businesses operated by households, with a specific emphasis on women's participation in crafting activities. It addresses the challenges encountered in managing such ventures; particularly highlighting those faced by women, and underscores the importance of training, diversification, and expansion of businesses, along with the necessary support mechanisms outlined in Annexure A4. Additionally, the data reveals significant interest among individuals in government-initiated small business management training, indicating positive intentions for future business growth among the majority of respondents. The findings also shed light on the varying levels of women's participation in crafting activities, informing recommendations for intervention, including small business training,

investment support, and financial assistance programs, designing programs for women, online business training, and livestock management training.

2.5 Micro Insurance

This section delves into the status and prospects of health insurance among the targeted population, specifically examining the accessibility of the Sehat Sahulat Card, a government-initiated universal health insurance program, alongside financial burdens and health-related challenges faced by households. Additionally, it evaluates households' willingness to participate in health insurance programs, including co-contributory initiatives²⁵, and their trust in health insurance providers. The data, detailed in Annexure A5, highlights awareness and utilization of the Sehat Insaf Card, concerns regarding healthcare expenses, and receptiveness to micro-health insurance programs. While a notable proportion of respondents have utilized the Sehat Insaf Card, widespread concerns persist regarding financial hardships linked to healthcare costs. Most respondents express interest in enrolling in micro-health insurance programs and are open to contributing to government-led initiatives. Recommendations include enhancing awareness of health insurance programs and fostering trust in government-led initiatives.

²⁵ Co-contributory health insurance program is an initiative whereby an insured patient contributes a specified and pre-determined percentage of treatment cost at the time of treatment, and the remaining cost financed by government under the health insurance program. Or a pre-determined specific annual premium is paid by household and get access to free treatment.

3. Study Findings: Assessment based on OECD DAC Criteria

3.1 Evaluating the Relevance of the Proposed Project

Addressing Regional Development Problems and Bottlenecks through Planned Project Approaches:

The feasibility study indicates that the proposed interventions could significantly address developmental bottlenecks and development issues in the region, although this is heavily dependent on their effective implementation and continuous, long-term commitment. These interventions, including livelihood creation, generating demands for health insurance, training programs, the formation and capacity building of local community organizations, collaborating with the local government, are primarily focused on crucial societal needs. However, it is essential to emphasize that the success of these interventions' hinges on sustained, long-term engagement. Over time, the collective impact of these measures could be a substantial step in mitigating the developmental challenges faced in the region.

Further analysis reveals that effectively addressing development issues in the target area necessitates multi-faceted interventions that span across both macro-level and community-specific initiatives. These initiatives must be tailored to address the unique challenges of the region, which include but are not limited to infrastructure development, enhancing education and human capital, improving healthcare services, creating livelihood opportunities, strengthening governance and institutions, and addressing security concerns. Such comprehensive and integrated approaches are crucial for overcoming the developmental hurdles in the specific context of KP, Pakistan.

Aligning Project Goals with Target Group Realities: The project's focus, prioritization, and objectives align closely with the KP government's social contract, as outlined in its Tribal Decade Strategy 2020-2030 and integrated development strategy. These alignments are evident in the project's emphasis on enhancing human potential, generating economic opportunities, and improving livelihoods, complementing the government's priority on public service delivery and fostering citizen participation.²⁶

Furthermore, the project is in sync with the social protection policy of Khyber Pakhtunkhwa, focusing on essential services provision, youth education and training, poverty reduction, and enhancing human capital in newly merged districts. While facing challenges like insufficient legal frameworks, limited institutional capacity, inadequate funding, and a non-responsive system to shocks,²⁷ the project strives to enhance the currently suboptimal state of social assistance, insurance, services, and labor market interventions in the region.

The project's objectives are specifically tailored to the needs of the targeted area and groups (detail of target group is given in Section 4), aligning with the KP government's broader goals. These goals include significantly reducing multidimensional poverty from 73% to 45.7% by 2030 and eradicating extreme poverty. Key strategies involve enhancing agricultural productivity, minimizing cultivatable wasteland, and focusing on livestock development to improve the livelihoods of the targeted groups in the region. Additionally, the project prioritizes youth skills development, better health services, responsive institutions, and sustainable employment opportunities as critical pillars for the development of the merged districts.

Field observations and focus group discussions affirm that improving life prospects in the targeted area is achievable through several key strategies. These strategies includes, mobilizing local community

²⁶ Integrated Development Strategy <https://lgkp.gov.pk/wp-content/uploads/2014/08/Integrated-Development-Strategy.pdf>

²⁷ Khyber Pakhtunkhwa Social Protection Policy 2022 [file:///Users/naimatwazir/Downloads/Booklet-Revised%20\(2\).pdf](file:///Users/naimatwazir/Downloads/Booklet-Revised%20(2).pdf)

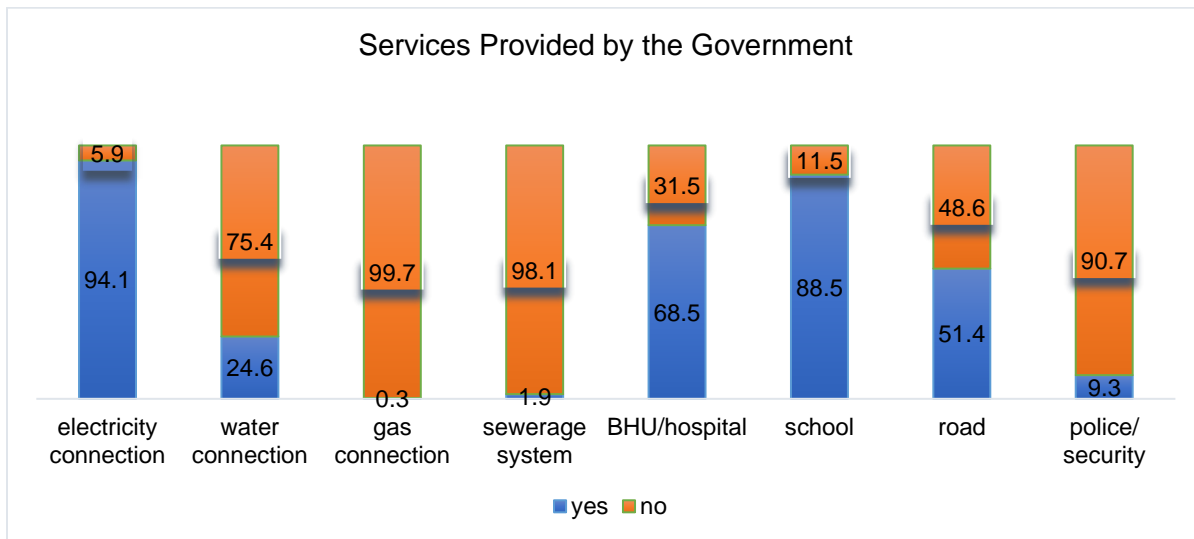
organizations to make government departments more responsive to local needs, alongside advocacy and collective community actions. Specifically, these strategies aim to sensitize government departments to support communities in improving agricultural productivity and farming practices, stimulate demand for health insurance and facilitate connections with government service providers, and promote youth employability through skills enhancement programs. Collectively, these approaches hold potential for a positive impact on the targeted community.

Assessing Intervention Design for Target Group Needs and Regional Challenges: The intervention strategy is designed to tackle the intricate issues faced by inhabitants of Mohmand and Khyber districts, tailored to meet the region's specific needs.

Social mobilization and collective action: Social mobilization and collective action are crucial in addressing the challenges identified during field visits in the merged districts. The poor delivery of government services in these areas stems from a combination of factors, including not only limited funding but also a lack of local accountability and awareness. A significant factor contributing to this scenario is the absence of collective advocacy for constitutional rights, leading to subpar government service provision.

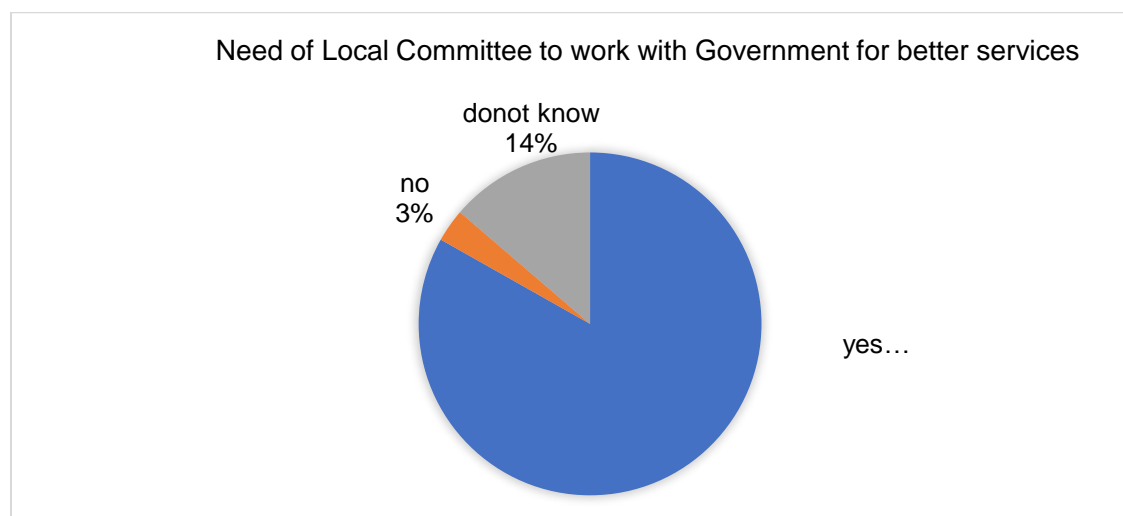
Field observations highlighted notable deficiencies in basic services like rural road infrastructure, education, and healthcare, as shown in Figure 5. That shows the availability of government services. For instance, the community has access to electricity, but availability of the electricity is poor. Other indicators depict access to government services but the provision and quality is poor and less effective to address the local needs.

Figure 5: Government Services at Local Level



There is a clear local demand for better service delivery, evidenced by the calls for the formation of local community organizations to work in tandem with government departments, as shown in Figure 7. These community organizations are envisaged to play a key role in bridging the gap between the community and government services.

Figure 7: Need of Local Committees/ Organization.



Further insights from stakeholder interviews reinforce the importance of these community organizations. Recommendations from these interviews stress the inclusion of youth representation at the Union Council level. This approach can ensure that the youth's perspectives and needs are adequately represented, enhancing the effectiveness of service delivery. By fostering youth involvement and establishing a collaborative framework between local community organizations and government departments, there is potential for significant improvement in service provision. This coordinated effort can facilitate a more responsive and accountable governance structure in the merged districts, addressing the core issues identified during the fieldwork.

The insights from field observations and stakeholder interviews points toward the need for a Social Mobilization Strategy that can address the deficiencies in rural infrastructure, education, healthcare, and other key areas such as agriculture and natural resources extractions, security, and women empowerment in the merged districts. This proactive approach in mobilizing and empowering the local population can foster a more responsive and accountable local governance structure, leading to improved service delivery and overall developmental progress in Mohmand and Khyber districts.

Livelihood generation: The livelihood generation intervention is tailored to meet the unique needs of the targeted population, with a special focus on agriculture, a key sector underpinning the community's economic health, as indicated in the given Table.

Major Occupation of Household

Major Occupation of Household				
	Frequency	Percent	Valid Percent	Cumulative Percent
Agriculture	108	33.6	33.6	33.6
Remittances	16	5.0	5.0	38.6
Govt. employee	34	10.6	10.6	49.2
Private employee	55	17.1	17.1	66.4
Livestock	5	1.6	1.6	67.9
Self employed	58	18.1	18.1	86.0

Figure 13: Small Business Prospects

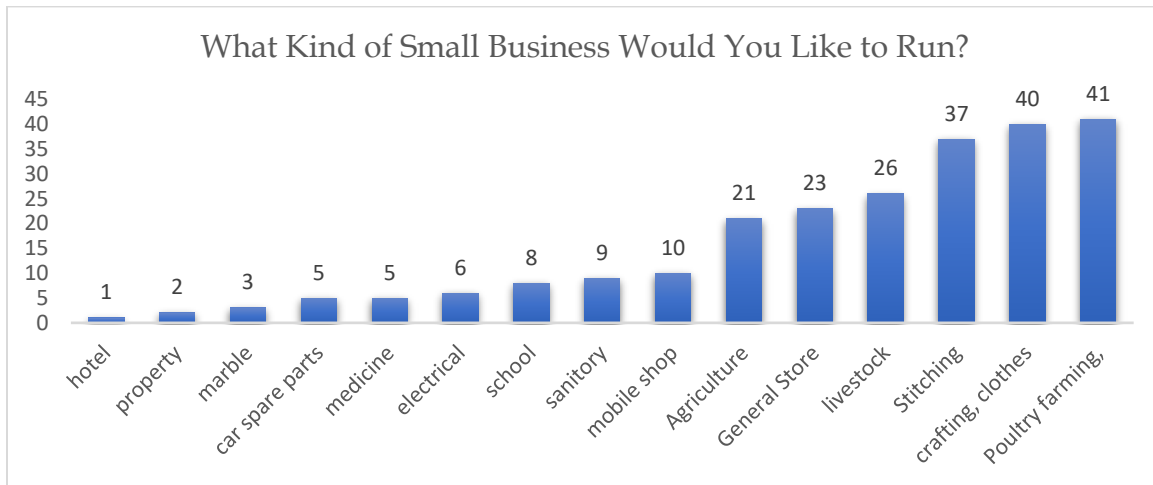
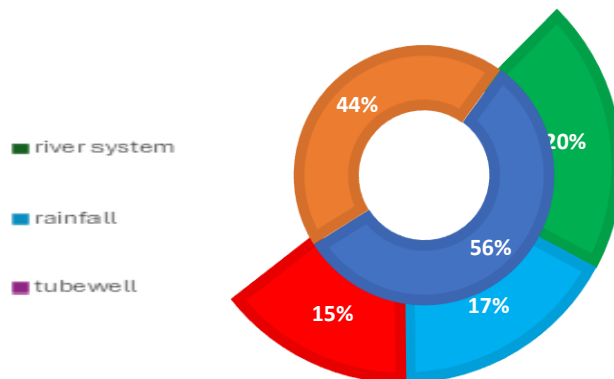


Figure 13 illustrates the diverse entrepreneurial aspirations of individuals surveyed, encompassing a range of business ventures where amongst respondents, especially marginalized females, the pursuits in crafting, garment stitching/manufacturing, and poultry farming is of high interest.

Figure 8: Land Ownership and Source of Irrigation
DOES YOUR HOUSEHOLD OWN ANY LAND



Although 56% of the population owns land and 44 percent are lack of agriculture land (as shown in the given Figure 8). Of these landowners, 20% utilize river irrigation, 17% rely on rain-fed, and 15% depend on tube-wells. The lack of advanced agricultural technologies and quality seeds, as shown in Figures 10 and 11 (Annexure A), significantly impedes agricultural productivity.

Stakeholder consultations have highlighted the importance of interventions that provide access to modern agricultural technologies, ensure the availability of improved seed varieties, and offer extensive agricultural training programs. These initiatives aim to boost productivity in a sustainable manner. Moreover, addressing fundamental issues like water scarcity, poor irrigation infrastructure, and uneven land terrain is crucial. Implementing solutions such as land leveling projects and installing solar-powered tube-wells could significantly enhance the region's agricultural output.

The development of livestock and poultry farming also presents viable opportunities for improving the livelihoods of impoverished households in the region. These sectors offer alternative and complementary

sources of income and nutrition, further diversifying the economic base and enhancing the resilience of local communities against economic fluctuations and environmental challenges.

Youth engagement and training: Capacity building emerged as a critical need in the project area. Despite active youth participation in the economy, high unemployment persists due to limited resources and opportunities. Survey data indicates significant female involvement in crafts (Table 9 in Annexure A), and both genders show a keen interest in training programs (Table 7 Annexure A).

Women engaged in crafting activities

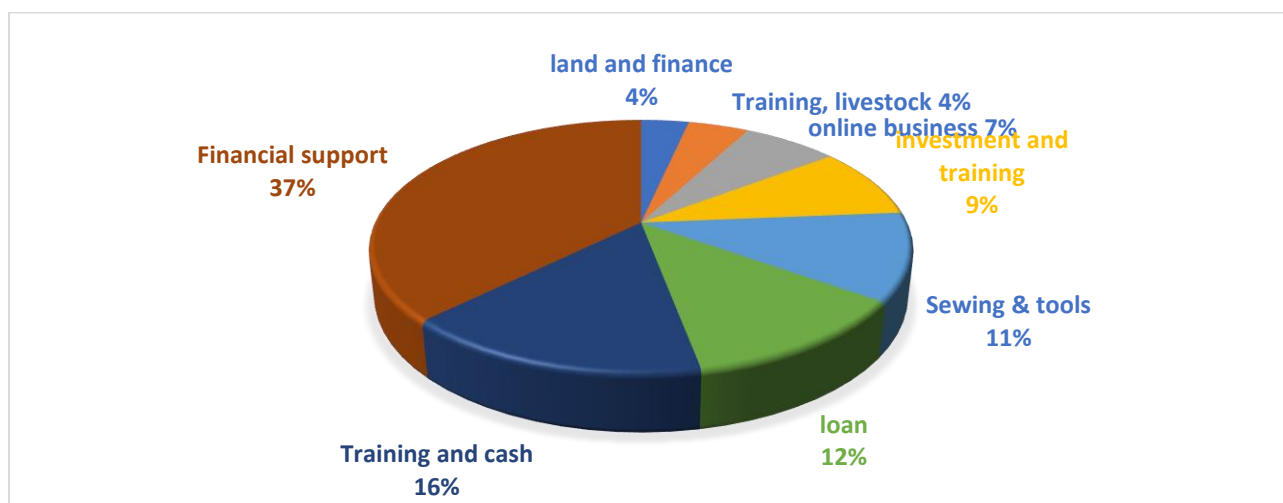
Response	Frequency	Percent
Yes	86	26.79
No	217	67.6
Do not know	18	4.98
Total	321	100

Individuals' Response in Small Business Management Training

Response	Frequency	Percent
Yes	295	91.9
No	19	5.9
Total	314	97.8
Missing from System	7	2.2
Total	321	100

Financial barriers, particularly affecting education beyond intermediate levels, were highlighted in youth discussions. This underscores the importance of integrating technical and vocational training with formal education to boost local economic development. The need for financial support and training for starting small businesses, especially among women for skills like sewing, is evident in the figure below (Figure 15 in Annex A).

Required Support for Expanding and Initiating Small Business



Female education in the region is hindered by financial limitations, constraining their potential for income generation beyond domestic roles. Traditional roles in stitching, teaching, and healthcare persist, with few entrepreneurial opportunities for women. Despite community support for female economic independence, the lack of focused programs necessitates targeted and prolonged interventions for women's empowerment, entrepreneurship, and capacity building trainings. The prevailing trend within the feasibility sample indicates that a certain percentage of women (27%) are actively involved in crafting activities. They aspire for attaining training programs such as sewing and tailoring training (11% as per figure above). Interestingly, their ambitions go beyond the barrier dimension as among women engaged in crafting activities within the feasibility sample, 49 are identified as illiterate.

In terms of health insurance, while 34.9% of the surveyed population have used the Sehat Insaf Card for health services (Table 12, Annexure A), a substantial 65.1% have not. This discrepancy, coupled with a high interest in health insurance programs (Table 14, Annexure A), points to a lack of awareness and outreach regarding existing schemes, calling for targeted efforts to increase utilization.

In conclusion, the proposed interventions align with the specific needs of the target population, addressing both their immediate concerns and the structural challenges within Mohmand and Khyber districts. The strategy encompasses collective action, livelihood enhancement, youth engagement, women's empowerment, and expanded microinsurance coverage, all aimed at fostering sustainable development and improving community well-being.

Ensuring Conflict Sensitivity in Program Implementation: When executing intervention programs focusing on social mobilization, livelihood generation, youth empowerment through vocational training, and health insurance awareness in KP's merged districts, specifically Khyber and Mohmand districts, adherence to conflict-sensitive principles, as per the DAC criteria, is essential. A distinctive feature of these regions is their complex security environment and the presence of security institutions.

The study suggests that security issues in these targeted districts are comparatively less acute than in other merged districts. While security concerns are not expected to profoundly impact project implementation in urban settings, rural areas in the tehsils warrant a more cautious approach. This is due to the influence of local notables, the local government, and security forces. To mitigate potential risks in these rural locales, a nuanced understanding of local dynamics and proactive engagement with key stakeholders is essential.

Given the heightened vigilance of security institutions and intelligence agencies in these regions, especially concerning new interventions and field surveys, it is crucial to obtain necessary clearances. Securing No Objection Certificates (NOCs) from relevant local government or military bodies is a pivotal step to ensure smooth program implementation and avoid conflicts with authorities.

Regarding cultural norms, it is vital that interventions in the NMDs are carefully aligned with existing cultural practices to prevent conflict. This is especially pertinent for women in these regions, where gradual transition is key. The complex interplay of religion, culture, and the historical context of conflict in these areas poses unique challenges for women, notably housewives and widows. Economic empowerment initiatives for women are crucial for enhancing their living conditions and fostering financial independence, particularly for those without male guardians.

However, in implementing women's empowerment activities, it is crucial to consider and respect local cultural and religious sensitivities. A measured and culturally cognizant approach is necessary to ensure that these initiatives are effective and do not inadvertently lead to conflicts or resistance within the community. In this regard, there is a dire need to sensitize the community through awareness sessions, especially aiming at the male members of the household. For awareness sessions around women social and economic empowerment, a point of leverage can be the aspect of level of education amongst the male population. The feasibility sample depicts that most of the survey respondents have completed 14 years of education followed by respondents with 10 years of education (Fig-1, Annex-A) with 20 respondents having 16 years of education. Further, the proposed training interventions of all kinds (youth, farmers, livestock etc.) must be capitalized upon for sensitizing these cohorts during the training for supporting women empowerment in their communities, Awareness techniques such as pamphlet-based approach and 'Edutainment'²⁸ approach can be administered during the training sessions especially for men of the community. By proceeding with awareness and sensitivity to these factors, the initiatives can more successfully integrate into the community fabric, supporting women's empowerment while maintaining harmony with the cultural norms.

For instance, field visits and FGDs in Tehsil Ekkaghund revealed mobility restrictions for women, limiting their ability to engage in external activities. Consequently, initiatives that allow women to work from home in these areas would be conducive to avoiding conflicts. In contrast, district Khyber shows a more supportive environment for women, with spousal backing and access to mobile phones, enhancing their communication and participation in diverse programs. Preserving cultural values remains pivotal, highlighting the need for women-focused programs and training that honor traditional norms. Prioritizing women's safety and respecting local cultural frameworks are essential for ensuring their comfort and participation. The keen interest of women in livelihood programs reflects a strong aspiration for economic empowerment, emphasizing the necessity of providing avenues for them to enhance their economic standing and contribute to their households' well-being.

Do No Harm Approach: Integrating the 'Do No Harm' approach in these interventions is crucial for ensuring that efforts do not exacerbate existing conflicts, disrupt local traditions, or create new tensions within the communities. This approach involves careful analysis of the inter-community dynamics and power structures to avoid reinforcing inequalities or divisions, and designing activities that promote inclusivity and mutual benefit. Regular monitoring and adaptation of strategies in response to community

²⁸ Edutainment interventions are used in experimental research where these interventions are essentially around facilitating awareness to population of interest by factoring in both education and entertainment aspects.

feedback are also essential to uphold this principle. Following a local situation assessment, the table below outlines district-specific risk factors, their severity, and corresponding mitigation strategies.

Risk factors

Type of risk		District	Severity	Proposed Mitigation strategy
Security of staff and beneficiaries	Security situation in certain areas is unfavorable and project team cannot access beneficiaries	Khyber Mohmand	Low Low-medium	<ul style="list-style-type: none"> • Field strategy to be developed for both districts based on latest security analysis; security situation to be reviewed regularly to identify villages that are safe and accessible • Establish relationship with community leaders who have access and influence in the area. These entities can act as intermediaries, providing insights and facilitating project activities safely • Key stakeholders (local government/administration, community elders/leaders, CSOs) to be taken on board to ensure support and ownership
Social/cultural	Some individuals or families show resistance to women's participation in training programs due to prevailing cultural norms and constraints	Khyber, Mohmand	Low	<ul style="list-style-type: none"> • Devise a cultural-sensitive mobilization strategy, focusing on engaging local male elders and leaders to highlight the constructive role women play in uplifting family and social status
	Resistance against micro-insurance due to prevailing religious/cultural beliefs	Khyber, Mohmand	Low-medium	<ul style="list-style-type: none"> • Involvement of local committee members who will be sensitized to the benefits of health insurance; include example of government's health insurance scheme as an accepted and successful model
Institutional	No-objection Certificate from Government	Khyber, Mohmand	Low-medium	<ul style="list-style-type: none"> • The process of obtaining approval from the Government is time consuming and beyond project control; however must be prioritized so that project activities are not affected
	Selection of project beneficiaries	Khyber, Mohmand	Low-medium	<ul style="list-style-type: none"> • A detailed field strategy will be imperative to select project beneficiaries to avoid the risk of exclusion, discrimination, or marginalization, particularly in service delivery
	Vested interest groups try to maintain the	Khyber, Mohmand	Low	<ul style="list-style-type: none"> • The community mobilization strategy will focus on developing a sense of ownership among beneficiary communities to respond to such

	status quo and disrupt project activities			incidents. For example, communities may be involved in finalizing the selection of venues and timing for training program etc.
Context risk	Floods or other natural disasters	Khyber, Mohmand	Low	<ul style="list-style-type: none"> • Such risks are beyond project control, however these should be considered when designing the project strategy; • As far as possible, interventions should be climate change and disasters risk resilient
	Political instability or conflict stemming from historical grievances, tribal tensions, or disputes over governance structures in the merged districts of former FATA.	All	Low to medium	<ul style="list-style-type: none"> • Ensure the organization remains politically impartial and refrains from aligning with any specific political faction or agenda. • Build strong relationships with local authorities, community leaders, and stakeholders to mitigate potential conflicts. • Monitor political landscape to anticipate and address potential sources of instability. • Prioritize programs and initiatives that promote community cohesion, inclusivity, and socio-economic development to reduce the likelihood of political tensions.
	Economic Currency instability/ Exchange rate fluctuation	All	Medium	<ul style="list-style-type: none"> • Provisions for the fluctuating and unstable monetary policies, as well as the dynamic economic environment, should be made. These include adjustments for inflation and currency rates.

Anticipating Lasting Changes: Subject to the program's duration, implementation, and effective monitoring, the program aims to work on social mobilization, collective action, livelihood generation, empowerment of youth (both male and female) through vocational training, and awareness programs related to health insurance. It can potentially open new avenues for livelihood generation, especially for marginalized women. It could generate new job opportunities, increase agricultural productivity, improve government service delivery, and encourage female empowerment.

Additionally, the program would enhance livelihood generation opportunities through improved agriculture productivity and small business initiatives. The pertinent interventions and trainings could potentially increase income generation and economic resilience among the targeted community members, thereby reducing dependency of women on other support to some extent. Specifically, the youth would be equipped with the required skills for livelihood generation.

To ensure the sustainability of these changes, it is essential to incorporate capacity-building activities, establish community-based structures for continued engagement, and facilitate linkages with government institutions and other development partners. Monitoring and evaluation mechanisms should also be put in place to track the project's impact over time and identify areas for further support or intervention. By focusing on sustainable outcomes, the project can maximize its contribution to the development goals of the merged districts of Khyber Pakhtunkhwa.

3.2 Assessing Project Alignment: Evaluating Coherence

Aligning Planned Activities with Human Rights Conversions: Alignment with human rights is a critical aspect in the implementation of developmental programs, especially in the merged districts of Khyber

Pakhtunkhwa. Evaluating the proposed intervention against international human rights standards and guidelines is imperative.

The intervention prioritizes the inclusion of marginalized women (via access to trainings, better health facility utilization through microinsurance awareness (particularly with regard to maternal and child health), and are increasingly thinking about entrepreneurship options of livestock and poultry farming), and recommends the incorporation for *Persons with Disabilities*, PWDs (via enrollment in trainings of all kinds and infrastructural measures to assist access of persons with disabilities at training venues into the targeted areas. Further, Field visits and surveys reveal disparities between urban and rural areas, underscoring the need for interventions primarily in rural regions. Youth empowerment, for both genders, is emphasized across urban and rural areas, with particular attention to marginalized groups.

Prioritizing interventions in rural areas and ensuring the inclusion of marginalized groups align with international human rights principles advocating for empowerment and participation. Establishing effective monitoring mechanisms is crucial to mitigate risks of exclusion or discrimination, particularly in service delivery.

Identifying Intervention Overlaps and Value Addition

The study outlines the following ongoing projects in the KP province involving UNICEF, GIZ, and NRSP organizations:

1. Project “**Internet Dost**”, funded by the National Rural Support Program (NRSP), will run from January 15, 2024, to June 30, 2024. The main objective is to train 12,000 women from the underprivileged and economically disadvantaged backgrounds of KPK through the Internet Dost Program.
2. Project “**Supporting the Private Sector to Sustain Civic Space in Khyber Pakhtunkhwa Province**”, funded by Center for International Private Enterprise. The project will run between October 1, 2023, to March 25, 2025. The project aims to strengthen women's chambers of commerce and industries in KP.
3. Project: The GIZ-funded project, "**Strengthening Capacities for Improved Management of Local Revenues and Local Services**," spanning from September 18, 2023, to September 30, 2024, aims to enhance the capacities of local governments in 23 Tehsil Municipal Offices. The primary objective is to improve the provision of local services through inclusive and gender-responsive management training and capacity-building activities. Furthermore, the project seeks to bolster revenue collection by equipping local governments with the necessary skills and knowledge regarding the use and operations of the FRIMS.

The feasibility study highlights that ongoing projects in KP primarily focus on settled urban districts rather than specific tehsil levels within the merged districts. Additionally, the GIZ project primarily addresses government regulatory aspects to enhance service delivery. In contrast, the proposed interventions aim to address the demand side of improved services through local committees and collective action. Specifically targeting marginalized women, CAMP intervention will play a significant role through on-ground interventions, such as livestock and micro-insurance awareness programs. The assessment also noted other actors and on-going projects in KP, pursuing development interventions such as, Welthungerhilfe providing humanitarian assistance and flood relief in KP, but the scope and domain of their interventions do not overlap the proposed interventions by CAMP.

Stakeholder Mapping

Government stakeholders, on-going projects and completed projects pertinent to the proposed intervention are listed in the Actor list Table.

List of Actors

Government Departments	
1	<ul style="list-style-type: none"> • Planning and Development Department as implementing agency
2	<ul style="list-style-type: none"> • Local Government, Elections, and Rural Development Departments
3	<ul style="list-style-type: none"> • KP Finance Department
5	<ul style="list-style-type: none"> • KP Health Department
6	<ul style="list-style-type: none"> • Zakat Ushr, Social Welfare, Special Education and Women Empowerment Department
7	<ul style="list-style-type: none"> • Communication and Works Department
8	<ul style="list-style-type: none"> • Public Health Engineering Department
9	<ul style="list-style-type: none"> • Department of Agriculture
10	<ul style="list-style-type: none"> • Livestock and Fisheries Department
11	<ul style="list-style-type: none"> • Forest and Wildlife Department
12	<ul style="list-style-type: none"> • KP Provincial Disaster Management Authority (PDMA)
13	<ul style="list-style-type: none"> • District Councils
14	<ul style="list-style-type: none"> • KP Elementary and Secondary Education Department (KPESED)
15	<ul style="list-style-type: none"> • Communities in project districts
16	<ul style="list-style-type: none"> • Community/village/neighborhood councils
17	<ul style="list-style-type: none"> • Jirgas in project districts
18	<ul style="list-style-type: none"> • BISP Beneficiary Committees
19	<ul style="list-style-type: none"> • Health Management Committees
20	<ul style="list-style-type: none"> • Parent Teacher Councils
21	<ul style="list-style-type: none"> • Citizen Facilitation Centers
International NGOs: On-going Projects	
NGOs	Project
National Rural Support Program (NRSP)	Internet Dost
Center for International Private Enterprise	Supporting the Private Sector to Sustain Civic Space in Khyber Pakhtunkhwa Province
GIZ-funded	Strengthening Capacities for Improved Management of Local Revenues and Local Services

World Bank	Khyber Pakhtunkhwa Rural Investment and Institutional Support Program
Prior Projects: Completed	
GIZ	Institutional Assessment of Khyber Pakhtunkhwa Information Commission
National Rural Support Programme (NRSP)	Conducting of Digital Literacy Trainings under internet dost project
Open Society Foundation (OSF)	Support to the local government department of Khyber Pakhtunkhwa for framing legal framework to protect the social customs of religious minority in Chitral District of Khyber Pakhtunkhwa.
GIZ	Improving Transparency and Public Service Delivery in Merged Areas through Effective Implementation of RTI and RTS Laws
National Endowment for Democracy (NED)	Improving Local Governance in Khyber Pakhtunkhwa'
Sub-National Governance (SNG)	Online civic services
Center for International Private Enterprise	To support market-oriented economic think tanks and civil society in advancing solutions to challenges of governance and local economic development in the province of KP
National Endowment for Democracy (NED)	Advocacy Campaign for Effective Local Governments in Khyber Pakhtunkhwa
National Endowment for Democracy (NED)	Strengthening Governance and transparency in merged districts of KP
Improving Public Service Delivery through Right to Information in Post-Conflict Areas of Khyber Pakhtunkhwa	Trust for Democratic Education and Accountability (TDEA) - Ambassador's Fund Grant Program (AFGP)

Local Stakeholder Engagement

Local Stakeholder engagement would establish a systematic and inclusive approach to implementation of the project; building and maintaining a constructive relationship with stakeholders; incorporate stakeholders' views and concerns into design/implementation; mitigate possible negative social and environmental downstream impacts; and enhance project acceptance and socio-environmental sustainability.

Consultation with the local institutions is crucial for the implementation and sustainability of the proposed interventions. Local major Institution are mapped in the given Table. District administration office would ensure local support at government level, and security protocols. During the field visit, the commissioner office had promised support for the implementation of the proposed project. Agriculture and livestock offices would provide, as discussed during the interview, training center for farmers and livestock related trainings. Local BISP office at Tehsil level has promised all support for marginalized household outreach,

the BISP office maintains data and access of all the deserving households, especially women. Finally, village councilors, and local notables, representative of each village council and village, would facilitate the bottom-up approach, the implementations and sustainability of the project.

Table Local Tehsil Level Major Institutions:

Tehsil Ekkghund, Jamrud, Landi Kotal	
1	Districts Administration: 1. District Commissioner Office 2. Local Police Office
2	Agriculture Department: 1. Local Agriculture Office
3	Livestock Headquarter: 1. Livestock Head Office
4	BISP Office: 1. BISP officials
5	Educational Institution: 1. Local Technical Institution
6	Village councilors
7	Local Notables/Elders

3.3 Enhancing Effectiveness: Optimizing Intervention Strategies in Merged Districts

Logic Models in Conflict Prevention: Assessing Impact Hypotheses: The project's foundational framework must be grounded in a comprehensive understanding of the interconnectedness among its various components, including social mobilization, livelihood generation, youth empowerment, agriculture productivity, and micro-insurance. This holistic approach acknowledges the complex dynamics at play and emphasizes the need for integrated interventions to address multiple facets of community development effectively.

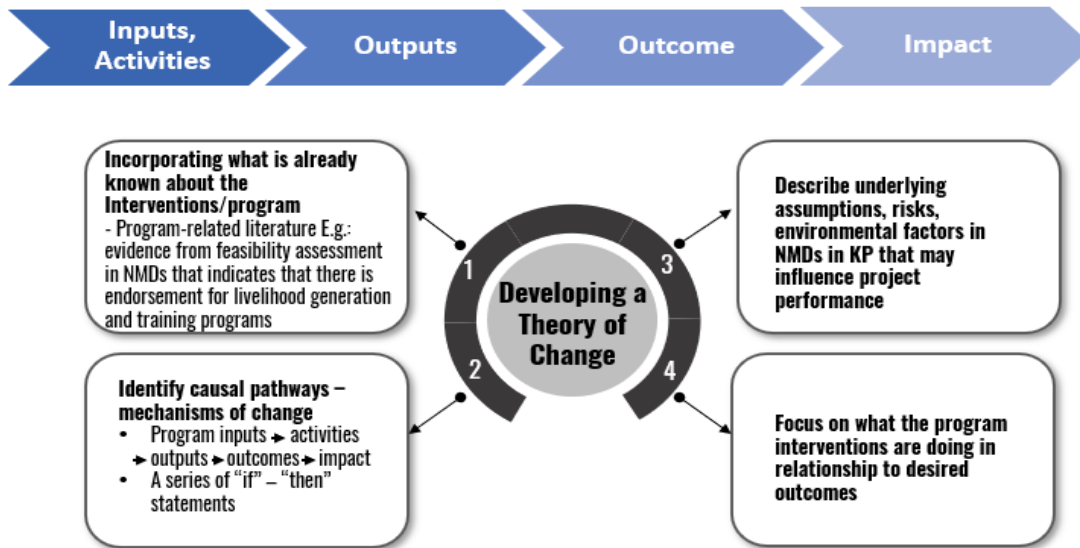
The impact hypothesis driving the project asserts that by implementing robust social protection measures and bolstering service delivery and livelihood opportunities in the targeted area, the socio-economic well-being of the affected populations can be significantly enhanced. This strategy aims to empower communities to mitigate risks and vulnerabilities, thereby fostering resilience and sustainable development outcomes.

A Holistic Approach for Sustainable Development in NMDs: The impact logic of the program is structured around the 'Theory of Change' framework, which delineates a causal pathway from intervention implementation to desired outcomes, specifying the necessary conditions for achievement. Additionally, it elucidates underlying assumptions for scrutiny and measurement, and identifies the mechanisms driving change. This framework facilitates the identification of program design weaknesses, evaluation outcomes, and measurable indicators.

Applying this impact logic to one of the proposed interventions, such as Youth trainings in NMDs, is anticipated to generate the intended impact by enhancing the following:

1. Capacity Building: Empowering Youth with Skills and Knowledge: Capacity building initiatives within the Youth trainings in NMDs intervention are designed to provide comprehensive skill development and knowledge enhancement opportunities for young individuals. Through tailored essential skill programs in areas like financial management, strategic planning, and stakeholder engagement, vocational skills training

in diverse areas such as carpentry, tailoring, electrical work, computer literacy, mobile repairing, plumbing, welding, masonry, graphic designing etc. and mentorship, youth are equipped with the tools and competencies necessary to navigate diverse socio-economic contexts effectively. This empowerment not only strengthens their individual capabilities but also cultivates a sense of agency and self-efficacy, enabling them to actively contribute to their communities' growth and development.



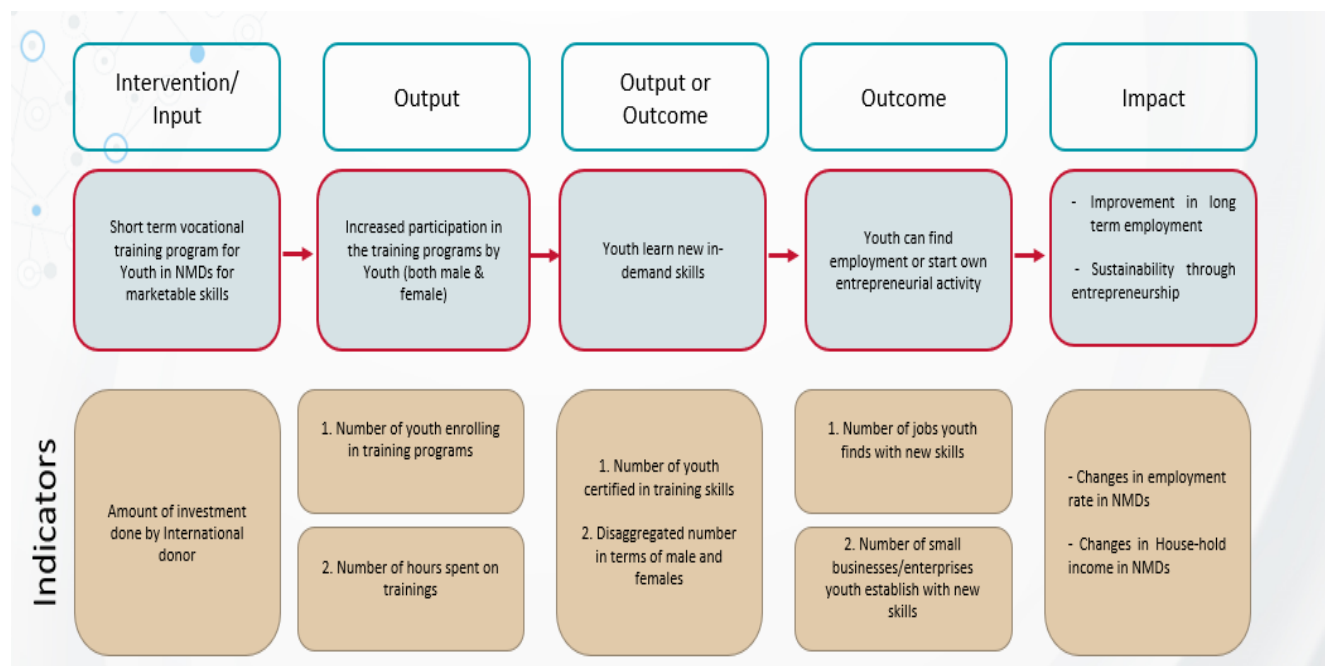
2. Community Engagement: Fostering Active Participation and Ownership: Community engagement initiatives within the Youth trainings in NMDs intervention are designed to cultivate a sense of belonging and shared responsibility among local residents. By facilitating inclusive dialogue, participatory decision-making processes, and collaborative problem-solving activities, community members are encouraged to actively contribute to the planning, implementation, and evaluation of development initiatives. This fosters a culture of ownership and empowerment, where individuals feel invested in the success of their communities and are motivated to work collectively towards shared goals.

3. Socio-Economic Development: Facilitating Opportunities for Livelihood Improvement: Socio-economic development efforts within the Youth trainings in NMDs intervention aim to create an enabling environment for sustainable livelihoods. By providing access to training, resources, and market linkages, the program empowers individuals to explore diverse income-generating activities and entrepreneurship opportunities. Additionally, it promotes the adoption of innovative practices and technologies to enhance productivity and resilience in the face of socio-economic challenges. Through these initiatives, the intervention seeks to not only alleviate poverty but also promote long-term economic stability and prosperity within NMD communities.

4. Resilience Building: Strengthening Resilience to Socio-Economic Challenges: Resilience building initiatives within the Youth trainings in NMDs intervention focus on equipping individuals and communities with the necessary skills, resources, and support systems to withstand and adapt to socio-economic adversities. By fostering a culture of innovation, problem-solving, and adaptive management, the program empowers participants to identify and address vulnerabilities, build social networks, and diversify livelihood strategies. Moreover, it promotes the integration of traditional knowledge and practices with modern approaches to enhance resilience in the face of evolving socio-economic dynamics. Through these efforts, the intervention aims to foster greater self-reliance, community cohesion, and sustainable development outcomes in NMD contexts.

By systematically analyzing the causal pathways and underlying assumptions, the program can optimize its effectiveness and maximize positive outcomes in NMD communities.

Mapping the Theory of Change of Youth Training Intervention onto a Log-Frame



Measuring Change: Indicators and Monitoring in Effectiveness Assessment: The study highlights the paramount importance of measuring change within the project, acknowledging it as a challenging yet indispensable endeavor. A comprehensive approach utilizing both qualitative and quantitative methods, including household surveys of the targeted population, is advocated for effective measurement. It highlights the critical necessity of establishing a baseline of data encompassing both qualitative and quantitative aspects to ensure accuracy in measurement. Furthermore, data collection is recommended at multiple junctures: at the project's inception, mid-point, culmination, and subsequently, five years post-project for impact evaluation.

The policy implementation approach must embody a continuous process of exploration, testing, and refinement to discern what strategies prove effective. Flexibility in policy design is imperative to accommodate the integration of additional insights during prototyping and implementation phases, allowing for adaptive refinement of policy frameworks based on emerging evidence and evolving circumstances.

This comprehensive approach to data collection and impact evaluation not only enhances the project's effectiveness but also furnishes invaluable insights for future interventions in similar contexts, both locally and internationally. To ensure accountability and impartiality, it is recommended that a reputable third party with international recognition oversee the project's progress. Early initiation of monitoring activities within the project's lifecycle ensures inclusivity, with quarterly assessments facilitating ongoing evaluation and enabling timely adjustments to enhance effectiveness.

Measuring Change & Process Monitoring of Youth Training Intervention

Program Feature	TOC Stage 1	TOC Stage 2	TOC Final Stage
Provision of vocational training	Youth of NMDs in KP receive the training-exposed to new learnings	Trainees have better information- develop new skills	- Engagement of youth in basic entrepreneurship - Increased economic well being of vulnerable households
Indicator	Training attendance	Training evaluation	- Number of small businesses/enterprises youth establish with new skills - Changes in employment rate in NMDs
Timeline	After two weeks of training	After six weeks of training	8 months after completion
Who receives indicator data?	Program Team	Program Team	Program Team
Refinements	If low attendance → refine outreach, training, location, timing	If evaluations indicate no informational gain →refine training session for better dissemination of information	If no change in the employment rate & entrepreneurship in NMDs > refine diagnosis

Crafting an Effective Results Matrix: Integrating SMART Indicators for Impact Assessment: In the pursuit of sustainable development goals, the intervention of livelihood generation through Small Enterprises necessitates a structured approach to monitoring and evaluation. Key to this endeavor are SMART indicators (Specific, Measurable, Achievable, Relevant, and Time-bound), which serve as essential metrics for assessing the effectiveness and progress of the intervention. By incorporating SMART indicators, stakeholders can systematically track the impact of initiatives aimed at fostering entrepreneurship and economic empowerment within communities. This introductory paragraph sets the stage for a detailed exploration of the specific indicators vital for evaluating the success of the livelihood generation intervention.

Core SMART Indicators for the Intervention of Livelihood Generation through Small

Dependent Variable: Likelihood of Future Business Engagement

The Likelihood of Future Business Engagement stands as the focal point of investigation, representing the inherent probability and predisposition of individuals towards engaging in future entrepreneurial pursuits. This variable serves as a pivotal lens for comprehending the intricate entrepreneurial dynamics and the latent economic potential in the region. Business Preference for future business delineates the articulated choices of individuals concerning the specific type of business they aspire to pursue in the future. This variable forms the basis for understanding diverse entrepreneurial aspirations within the study population.

Independent Variables:

1. Current Business

Current Business refers to the ongoing entrepreneurial endeavors in which individuals are presently engaged. This variable acknowledges the existing business landscape as a potential influencer of future business preferences.

2. Training for Business

Training for Business explores the feasibility of training, investigating whether individuals are willing to participate if the government provides such training. Further, it assesses the potential impact of training on shaping future Business Preferences.

3. Support

Support encompasses critical elements such as financing, access to raw materials, loans, stock management, and production processes. This variable aims to discern how the availability of support structures influences the likelihood of individuals engaging in future business activities.

4. Demographic Variables

Demographic Variables include current income, education level, and age. These factors operate as independent variables influencing the likelihood of future business engagement, reflecting the broader socio-economic context.

5. Problem

Description: Problem incorporates the potential hurdles and challenges individuals may face in starting or sustaining a business. This variable aims to identify obstacles that may hinder business engagement.

6. Education

Education serves as a pivotal independent variable, indicating the formal educational attainment of individuals within the study population. Recognizing that education shapes skill acquisition, knowledge acquisition, and overall readiness for prospective business involvement, this variable highlights that higher educational levels may empower individuals to navigate entrepreneurial challenges adeptly and make well-informed business decisions.

7. Income

Income serves as a pivotal independent variable, capturing the current financial status of individuals. This variable reflects economic capacity & stability of participants, playing a significant role in shaping their willingness to embark on future business endeavors. Higher income levels may be associated with greater financial confidence & resources for entrepreneurial ventures.

8. Age

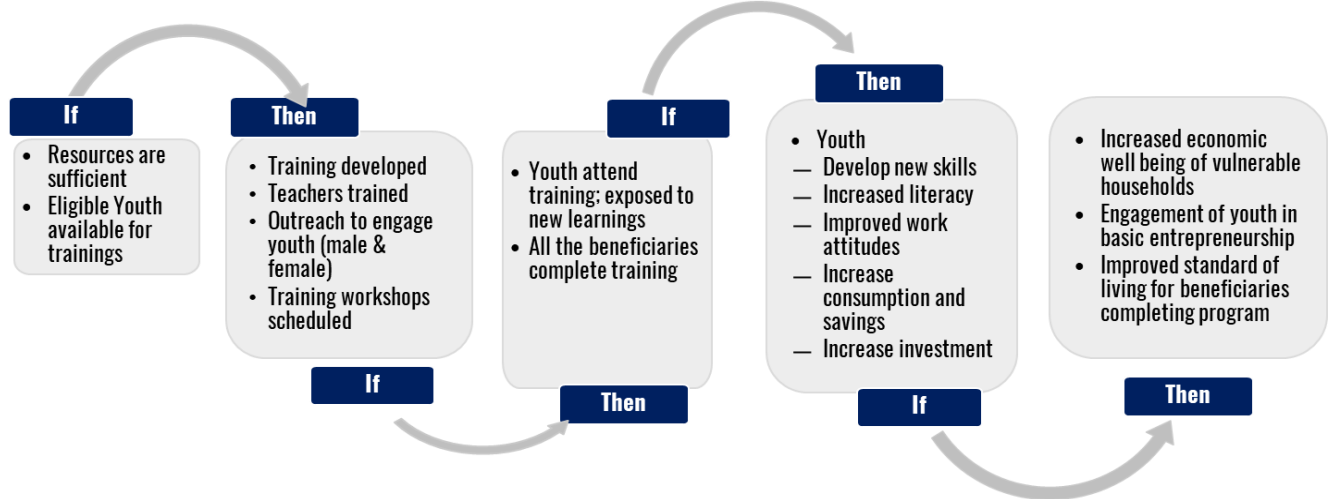
Age operates as an influential independent variable, representing the chronological age of individuals within the study. This variable recognizes that age can impact one's approach, perspective, and strategic planning in business activities. Younger individuals may exhibit a more dynamic and risk-taking entrepreneurial spirit, while older ones may bring experience & strategic insight to their business pursuits.

9. Type of UC

Type of UC categorizes individuals based on their location, distinguishing between rural and urban areas. This variable investigates the varying possibilities and challenges associated with business engagement in different environments.

Assessing Plausibility and Risks in Impact Matrix Relations: The impact matrix outlines plausible cause-effect relationships for various interventions according to the feasibility assessment findings. However, it's crucial to remain attentive to potential interactions influencing the patterns of change within the explored causal pathway. Additionally, vigilance is necessary to anticipate and address unintended consequences; for instance, ensuring the preservation of the causal sequence in youth training interventions to achieve desired impacts.

Theory of Change Causal Sequence of Youth Training Intervention



It is imperative to thoroughly validate the key assumptions and contextual influences associated with each intervention. For instance, the youth training intervention rests upon certain underlying assumptions. If these assumptions are not robust, the proposed theory of change may deviate from its intended trajectory.

Theory of Change of Youth Training Intervention with Assumptions



Strategic Sustainability: Embracing a Multilevel Approach for Activity Planning: The study highlights the importance of integrating both community-level and policy-level activities for effective

project implementation. Community-level interventions focus on building capacities, raising awareness about local needs, identifying necessary interventions for marginalized groups, implementing skills enhancement initiatives, and economically empowering women through culturally tailored programs. These efforts address community-level needs comprehensively.

Concurrently, policy-level activities target improved service delivery in key areas such as education, health, and agriculture at the local level. During this process, marginalized households and villages in the peripheries of the targeted area should receive prioritization and due consideration in resource allocation at the government level. This ensures equitable distribution of resources and addresses the needs of the most vulnerable populations.

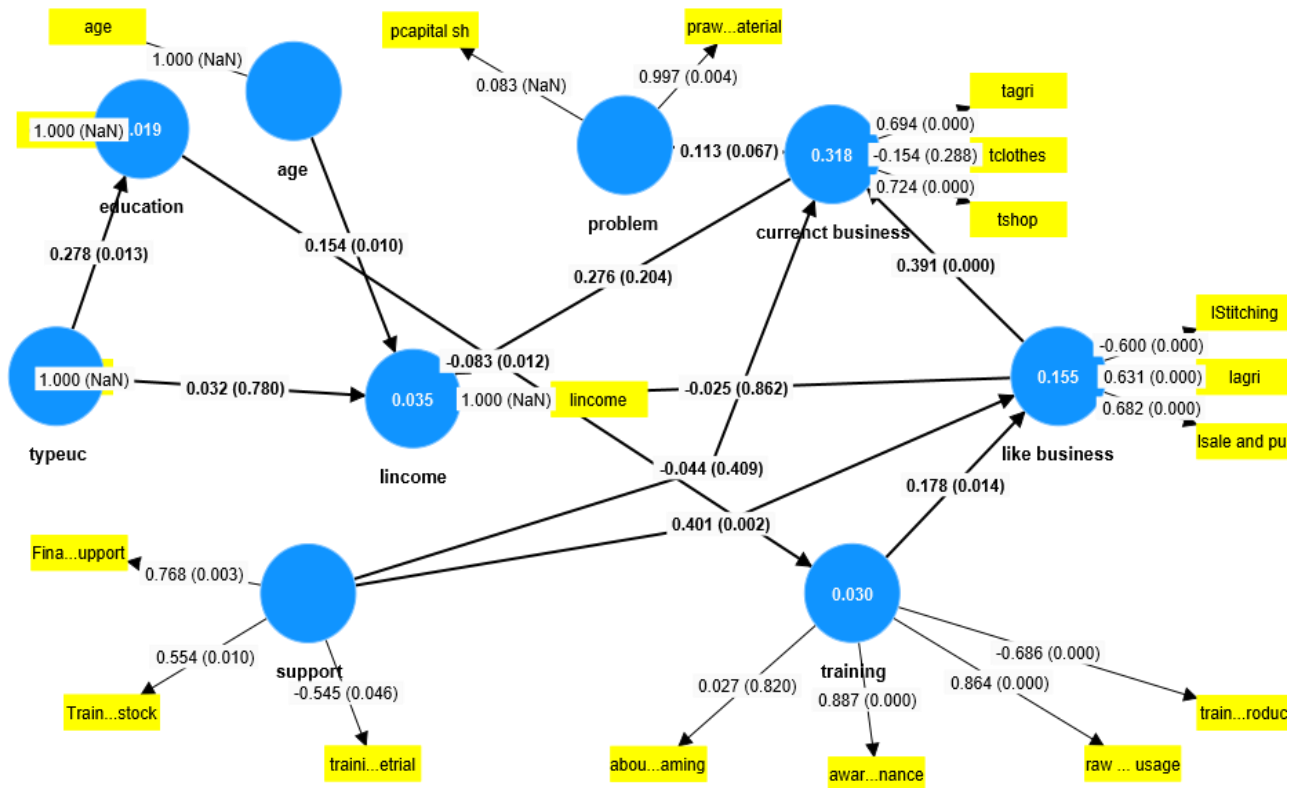
3.4 Measuring Impact

Analyzing Project Impact: Objectives, Structures, and Norms for Sustainable Change: The proposed intervention strategy aims to enhance social protection through livelihood generation, skills development programs tailored to the specific needs of male and female youth, social mobilization, and health and micro-insurance awareness in Tehsil Ekkaghund, Jamrud, and Landi Kotal. These objectives significantly contribute to the overall goal of fostering sustainable development and social protection in the targeted communities. These efforts align with provincial, national, and international development goals, such as poverty reduction, economic empowerment, and social inclusion.

The project design is intended to be comprehensive and inclusive, adopting a multi-sectoral approach, it seeks to address the complex challenges faced by the target communities, thereby enhancing effectiveness and sustainability. Changes will occur at multiple levels, including individual behavior, community dynamics, and institutional frameworks. For example, through skills development initiatives, social mobilization programs, and livelihood generation, the project aims to improve local government services and governance structures.

Regarding impact and effectiveness, the study analyzes socio-economic determinants in Khyber and Mohmand Agency using a structural equation model (SEM analysis details, and variables details are given in Annexure C, Figure 16 and Table 23), as shown below,

Figure 16: SEM Diagram: Factor Affecting Livelihood Generation



Author Illustration

The analysis systematically explores relationships between age and income, current business involvement, education, liking for future business endeavors, and urban-rural classification (Type uc). Findings reveal a positive association between age and income, indicating higher income levels among older individuals. Education shows a positive association with training participation, suggesting potential enhancements in living standards through skill development.

Table 6: Business Feasibility and Potential Prospects

Business Feasibility				CI	
Variables	Path Coefficients	T Stat	Value	2.5%	97.5%
Age -> Income	0.154	2.584	0.010*	0.0371	0.2714
Current Business -> Income	0.276	1.270	0.204	-0.1832	0.6827
Education -> Training	-0.083	2.499	0.012*	-0.1433	-0.0148
Like Business ->Current Business	0.391	9.885	0.000*	0.3187	0.4743
Like Business -> Income	-0.025	0.174	0.862	-0.3132	0.2500
Problem -> Current Business	-0.113	1.834	0.067*	-0.0135	0.2278
Support -> Current Business	-0.044	0.826	0.409	-0.1420	0.0656

Support -> Like Business	0.401	3.043	0.002*	-0.1717	0.5309
Training -> Like Business	0.178	2.451	0.014*	0.0195	0.3083
Type UC -> Education	0.278	2.483	0.013*	0.0502	0.4985
Type UC -> Income	0.032	0.279	0.780	-0.1980	0.2510

Author's Calculation

Notably, individuals expressing a liking for future business demonstrate a robust positive association with current business involvement, highlighting the impact of personal preferences on entrepreneurial activities. Support systems and training opportunities emerge as critical factors influencing individuals' inclinations towards future business pursuits. Additionally, the study highlights rural-urban disparities in education levels, with urban individuals tending to achieve higher educational attainment. Addressing these disparities holds promise for improving living standards, societal well-being, and contributing to economic growth.

In summary, the SEM-based analysis offers valuable insights into the dynamics shaping business feasibility and the eventual impact. It depicts the importance of personal aspirations, support networks, and training opportunities in influencing current and future business engagements. The study also emphasizes the need for targeted interventions to enhance educational opportunities and support systems, particularly in rural areas.

3.5 Project Sustainability

Enhancing Sustainability: Strengthening Results and Impacts: To ensure the impact and sustainability of the proposed interventions, effective project implementation and integration with local organizations and government bodies is crucial. Incorporating local government and community in the project implementation phase serves various purposes: firstly, the local knowledge and expertise of government officials such as agriculture department, livestock office, civil administration would facilitate project implementation according to cultural dynamics and local needs. Secondly, involving locals and government departments would ensure trust in the region. Thirdly, it would facilitate logistics and coordination among the authorities for smooth continuation of the project. Furthermore, the integration would help align efforts with local needs and priorities, such as integrating women's skills development with market demands and introducing crafted products tailored to local markets. By enhancing employability in sectors like education and health for trained women, and aligning youth participants with local industries, the interventions can be better positioned for long-term success.

For the integration, the study identifies local civil administration at Tehsil level, Agriculture department, Livestock administration, BISP office, health sector. These departments have ensured full cooperation and facilitation in terms of providing training centers (Agriculture, livestock) and BISP office in identification of marginalized households.

Moreover, it's essential to provide comprehensive training to local committees to ensure they can effectively collaborate with the government and maintain organizational structures. By empowering marginalized voices and promoting participatory decision-making, the study highlights the importance of fostering social sustainability within the community. Additionally, incorporating environmentally friendly technologies and adhering to eco-friendly practices are essential for ensuring ecological sustainability and minimizing harm to the environment. The study notes that by integrating efforts with local organizations, empowering communities, and adopting environmentally friendly practices, the proposed interventions can achieve both

social and ecological sustainability, thereby maximizing their long-term impact and effectiveness beyond the lifespan of the project.

Fostering Long-Term Capacities: Empowering Target Groups for Independent Sustainability: To ensure the long-term effectiveness of interventions, it is crucial to provide continued support to program beneficiaries even after the project concludes. This entails ensuring the availability of resources for follow-up activities and providing necessary guidance and assistance through local institutions and market mechanisms. For example, raising awareness about formal institutional loan procedures for small business initiatives can empower beneficiaries to sustain their ventures. Merely conducting project activities without ongoing support is unlikely to yield sustainable results. Therefore, it is recommended that program activities be closely monitored throughout implementation and follow-up periods to maximize the practical benefits for beneficiaries.

The intervention aims to enhance the capacity of targeted groups to mitigate poverty and social protection risks. By fostering gender equality, inclusion, collective action, and cooperation, social capital in the targeted area can be strengthened, leading to long-term positive impacts for the community. The study underscores the potential for interventions to foster collaboration between local communities and government entities, thereby creating an environment conducive to improved service delivery and sustainable livelihood generation.

4. Target Groups and Activities Alignment

The study carefully designs project activities to align with the unique needs of different target groups, ensuring that interventions are tailored to address specific challenges faced by each community. It emphasizes the importance of directing resources towards initiatives such as livestock, micro insurance and programs promoting female empowerment, particularly in the rural areas of each Tehsil. This strategic focus on rural regions acknowledges the distinct socio-economic context and vulnerabilities prevalent in these areas, highlighting the need for targeted support to uplift communities and enhance their resilience.

During field visits and engagement with local stakeholders, including household members and community representatives, the study identifies target groups for the proposed interventions. By conducting household interviews, facilitating FGDs, and gathering insights through stakeholder consultations, the study noted diverse needs and priorities of the target groups. The identified target groups are listed in the following table.

Identified target groups

Intervention	Activities	Target Group
Social mobilization	Training	1. Youth Male/Female (Masters, M.Phil.)
		2. Notables (community level)
Collective Action	Awareness Sessions at Village Council level	1. Youth: Post Matriculation, and Graduates, & female participation
		2. Community Notables
		3. Social worker and activities

Agriculture	Agri Training	1. Farmers
	Irrigation channels	2. Land un-cultivated due to lack of water channels in the rural area
	Land leveling	3. Land suitable for cultivation in rural areas
	Solarization	4. Cultivable land rely on electric tube-well
Youth Empowerment	Online business Training (Male & Female)	1. Post Matriculation
	Small business initiatives	2. Business oriented youth
	Skills development training (Male)	3. Youth (age: 18-35)
	Skills development training (Female)	4. Female (age 18- 45)
	Supporting equipment for disabled	5. Male and female (disabled)
Health Insurance	Awareness programs at village council level	1. Individuals who do-not have micro insurance.
	Advocacy with the local government	
Livestock	Poultry farming and training	1. Marginalized household female in rural areas
	Livestock Farming and training	2. Marginalized household female in rural areas

5. Recommendations

The study offers a comprehensive set of recommendations for intervention implementation in Mohmand and Khyber districts, KP of Pakistan, centering on key pillars of **social protection**: social mobilization, youth empowerment, livelihood generation, and microinsurance awareness. These interventions aim to bolster social protection in the merged districts, providing a roadmap for sustainable development, individual and community empowerment, and alleviating socio-economic challenges.

5.1 Trainings Program

The table below presents specific recommendations related to training, which have been carefully derived from thorough field visits, comprehensive household surveys, insightful FGDs, and in-depth interviews with key stakeholders. These recommendations offer actionable insights aimed at facilitating the effective implementation of training initiatives.

Proposed Intervention and Recommendations

Interventions	Training and Intervention	Venue
---------------	---------------------------	-------

Social Mobilization	1. Establish local community organization at village level	Local institution private Or Notables Hujra (guest house)
	2. Establish Committees at Tehsil level comprising of representatives' form village council level committees	
	3. Ensure youth representative, along with community notables	
	4. Empower the committees through management training, awareness about citizen rights, needs of the community, and how to work with local government training.	
Youth Empowerment	Male educated Training. 1. Online business and e-commerce training along with supporting mechanism (access to formal loans for business initiative) 2. Awareness about available financial access support from formal institutions 3. Mobile money business	Local Technical center. Private educational institutions
	Male un-educated: Training 1. Electrical work (solarization and solar business) 2. Painting 3. Mobile repairing	
	Female Training: 1. Hand crafting and stitching	Local educational center for girls
	2. Poultry and dairy farming	Rural household hujra(guest house)
	Providing livestock: 1. Livestock for marginalized females 2. Poultry farming for marginalized females	Rural area and marginalized households identified by BISP Official as deserving
	The intended provision of livestock and poultry must be vaccinated and adaptable to climate of the targeted area.	
Natural Resources	Training: 1. Natural resources extraction 2. Engagement of locals in natural resource extractions	
Agriculture	Trainings: 1. On orchards spray and Fertilizer 2. Tunneling and related trainings.	Government agriculture department offices (training center available)

	Intervention: <ul style="list-style-type: none"> 1. Provision of quality seeds 2. Irrigation channels 3. Land leveling. 4. Solarization of tube-wells 	Rural villages and urban cultivatable land
Livestock	Training: <ul style="list-style-type: none"> 1. Management 2. Vaccination 3. Disease diagnosis and treatment 4. Required nutrition. 	Local government livestock training centers
	Provision: <ul style="list-style-type: none"> 1. The livestock should be provided to households living the poorest villages 2. It should be provided to female from poorest households 	Rural villages
Poultry	Training: <ul style="list-style-type: none"> 1. housing, feeding and nutrition, 2. disease prevention 	
	Provision: <ul style="list-style-type: none"> 1. To female from poor households and villages 	Rural villages
Collective Action	Awareness session/programs <ul style="list-style-type: none"> 1. Awareness programs at village level should be conducted to create awareness about the responsibility of government and services that government must provide the basic services 	Local hujras and gather centers
Health Insurance	Awareness session/programs <ul style="list-style-type: none"> 1. At the village level, awareness programs about micro insurance should be conducted to create awareness in villages. 2. A facilitation program should be conducted to facilitate the not insured households 	Local hujras and gather centers

5.2 Youth Empowerment

The study underscores the practical implications of technical education in tackling the challenges encountered by youth in scaling their ventures. It advocates for short courses tailored to freelancing and online business, including platforms like Amazon, to foster entrepreneurial endeavors. Furthermore,

modernizing traditional businesses through education in areas such as IT, e-commerce, computer skills, mobile repairing, and technical training, alongside skill development initiatives in small businesses and natural resource extraction, is recommended. These programs should specifically target educated youth. Subsequently, providing financial support for initiating small and online businesses is crucial, as evidenced by data indicating that 37% of the sampled population seeks such support to kickstart business activities.

Youth Empowerment (Male)

1. Basic Technical Training Skills: Delivering customized training programs to enhance practical skills among uneducated youth. Basic technical skills training includes foundational instruction in critical technical domains such as carpentry, plumbing, electrical work, automotive repair, bricklaying, plastering, welding, metalworking, painting, and natural resource extraction. The short training workshops may comprise of two weeks, targeted towards youth below the age of 25 years, with low literacy levels, a special focus must be higher concentration of training workshops in rural areas these initiatives are designed to equip uneducated male youth with essential expertise for specialized employment opportunities that require hands-on technical proficiency.
2. Providing Interest-Free Loans: Empowering individuals to implement entrepreneurial ideas and establish small-scale enterprises. The provision of interest free loans will help youth to pursue various small business opportunities such as soap and detergent manufacturing, mobile money agent shops, computer software houses, and e-commerce businesses.

Youth Empowerment (Female)

1. Introduction of programs specifically aimed at empowering women to address economic vulnerability and dependency. In this regard, support for small home-based businesses such as stitching, handcrafting, and farming. Tailoring, pickling, , and importantly nursing courses which will enable women in to work in medical sector, basic medical training for women to become midwives.
2. Initiatives tailored to widows with orphaned children, potentially facilitating ventures in poultry farming, dairy farming, sewing, and agriculture.
3. Establishment of dedicated education and training centers tailored to women's trainings aimed to generate income and livelihoods for women.

Technical centers are available for the male youth in the targeted tehsil. However, as per the gathered information, no training center is available for female trainings except in Sardar Kally Jamrud tehsil of Khyber District. It is recommended to build a training center for women in Tehsil Landi Kotal of Khyber District and Tehsil Ekkghund of Mohmand District. For the proposed trainings for both male and female, locally available technical center/colleges for male can be utilized and for female trainings, local available female education center can be utilized for trainings programs.

The duration of the training and short courses varies according to requirement, from 2-3 weeks. For instance, the DTI computer course requires 2 years completion. But short courses such mobile repairing require a 3-6 months' period. The time duration of the short courses depends on trainings requirements for both male and female. Time duration for the trainings program, depend upon the intended trainings and short course.

5.3 Livelihood Generation

According to the data, agriculture emerges as the major occupation; constituting 33.6% of the sampled population rely on agriculture sector, and many others on the locally available natural resources. Therefore, major intervention is required in this area for livelihood generations.

Natural Resources Utilization and Livelihood Generation

1. Emphasizes the need for skill development in the mining sector, agriculture, livestock, and poultry farming to maximize its potential emphasizing the necessity to train farmer's workers in advanced farming and mining techniques to enhance productivity and sustainability within local community.
2. Many households depend on these resources such as marble, Nephrite, and Chromite for daily wages, engaging in activities such as marble extraction and transportation. Training for related to natural resources would improve the employment opportunities in the region.
3. Utilizing local human resources for extracting indigenous natural resources is crucial. Prioritizing the training and involvement of local youth in resource management and extraction processes is essential.
4. To ensure that proposed livelihood initiatives align with community needs and priorities, active participation of the local community in planning, implementation, and monitoring processes is crucial. This can be facilitated by establishing transparent and inclusive decision-making structures, such as local committees comprised of fair and accountable members.
5. The installation of small-scale local industries for processing natural resources and agriculture products holds significant potential to benefit most of the community, including marginalized households in terms of generating income and employment opportunities.

Agriculture and Livestock

There is untapped potential in the region's arable land, but challenges such as water availability, irrigation infrastructure, and land leveling hinder agricultural activities.

1. Interventions like **land leveling** projects, **durable water channels**, and **solar-powered tube-wells** could significantly open new avenues for agricultural productivity and improve livelihoods.
2. Developing livestock and poultry farms also offers opportunities to uplift impoverished households.
3. Providing tailored technical and vocational training enhances their skills and enables sustainable resource extraction. Lease agreements should prioritize equitable benefits for local communities.
4. The majority of the population associated with agriculture for their livelihoods, though majority are utilizing for personal consumption rather than trading the agriculture products. Priority areas for intervention include land leveling, improvement of irrigation channels, provision of adequate water resources for cultivation, the enhancement of transportation infrastructure, and tunnelling. These interventions hold significant potential for bolstering household livelihoods.
5. Notably, some villages need immediate attention due to their dire drinking water and inadequate road infrastructure.

6. Livestock and poultry farming also present viable opportunities for augmenting household income and overall livelihoods in these targeted districts.
7. Initiatives should prioritize solarization of tube wells to increase agricultural productivity and livelihoods generation.

The required training for farmers should be aimed at increasing the agriculture productivity of wheat, maize, and fruits. Along with the training, good quality seeds and fertilizer should be provided for the farmers owning agriculture land. Providing hybrid seeds is likely to increase the growth of agriculture production in the area.

Importantly, the livelihood generation through agriculture productivity mainly relies on opening new arable land for cultivation and agriculture such as land leveling, durable irrigation channels and solarization of tube wells. The existing arable land is utilized to the most extent, though provision of quality seeds and fertilizer would enhance productivity.

Training, Location, Timing for Agriculture Sector

Training center available in each targeted Tehsil at its agriculture department, subject to consultation with the relevant authority.

The required trainings in agriculture sector are related to:

1. Fertilizer
2. Seeds related.
3. Vegetables related training

The suitable trainings time for agricultural trainings:

1. Maize training time August and wheat suitable timing is December to March
2. Apple orchards training time can be summers for harvesting and winter for the nutrition of orchards.
3. Vegetables trainings can be summer can range from march to end of summer season.

The required duration of training should be 1-3 days for each Tehsil and farmers of each tehsil can be divided into groups to cover large number of farmers. The farmer training should be extended to all Tehsils of both Mohmand and Khyber Districts.

Livestock and Poultry

The provision of livestock should be along with the training on how to farm the livestock and poultry to be productive sustainably. Specifically, training such as husbandry practices including breeding, nutrition, health management, and disease prevention. This includes training on vaccination schedules, deworming, and proper housing and ventilation for livestock.

Poultry training should cover all aspects of poultry farm management including housing, feeding and nutrition, disease prevention. And how to market the product of poultry farming.

Training for male farmers of livestock can be conducted at livestock offices at tehsil level. Rural poultry farming training should be conducted for deserving women at household level in each Tehsil rural parts. It is recommended to provide poultry farming training and resources to deserving women in the rural part of the Tehsils. The related trainings should be conducted at each village level in each tehsil where women can participate easily. Importantly, female trainer would be suggested to train women during rural poultry trainings.

Livestock Related Trainings

1. Management
2. Vaccination
3. Disease diagnosis and treatment
4. Required nutrition.

Poultry Related Trainings

1. Management
2. Vaccination
3. Housing

5.4 Social Mobilization and Community level Collective Action

The data depicts that government provision of basic services at the local level is unsatisfactory, and there is a dire need for improving government services at the local level. In this regard, the targeted sample population and notables of the community are of the view that local committees are needed and that these committees would increase government services. In addition, notables believe that local union/village/neighborhood councilors fail due to certain constraints such as authority, resources, and awareness to improve government services, therefore the newly established committees need to trainings to work closely with local union/village/neighborhood councilors and local government aims to foster services delivery. Such training can be conducted at local available education centers.

The synthesis reflects the outcomes of FGDs in different Tehsils within District Mohmand and Khyber, highlighting various challenges and recommendations for local committees, government service delivery, natural resource utilization, collective action, youth training, and the establishment of a judiciary system.

Key findings include the dysfunctionality of the elected union councils due to lack of authority and resources, the dominance of traditional systems like the Jirga, and the necessity for improved infrastructure and service delivery, particularly in health, education, and livelihood sectors.

1. It is recommended to establish new local committees and community organizations at village and at tehsil level to work in collaboration with local government on promoting inclusive economic development and expediting the establishment of a functional judiciary system. These committees should be trained to present village level issues and service delivery requirements at government level in collaboration with union/village/neighborhood councilors.
2. The newly established committees and community organizations should be given training on management, coordination with relevant departments, awareness, advocating for establishing a speedy judiciary system and infrastructure and, promoting collective action to address community challenges comprehensively.
3. Additionally, creating awareness among the community about their rights should be a prime responsibility of these committees. Village-level committees could potentially enhance effectiveness in addressing local constraints and issues.
4. Training for newly established village level committees should set priorities for local govt. in enhancing community well-being and development, including ensuring access to affordable fertilizers, addressing water scarcity through improved availability and channels, and providing

training for farmers. Other critical areas for attention include infrastructure development, such as road construction, and improving healthcare facilities to address shortages in essential medical supplies. Prioritizing water resources, education facilities, and health services, as well as appointing a local focal person within committees, could significantly benefit the community, particularly addressing the needs of the poorest households. Overall, health, education, and water availability remain prime concerns for the community's well-being and development.

5. Community-based collective action can serve as a catalyst for collaboration with local authorities to enhance service delivery. However, challenges such as resource constraints and security risks must be addressed to facilitate effective engagement. Through collective action, communities can advocate for their needs and mobilize support for initiatives aimed at improving service delivery. Moreover, successful examples of community-led initiatives from other regions can offer valuable insights and best practices that can be adapted and implemented in our context.
6. Additionally, the representation of marginalized members of society should be part of the newly established committees. By addressing challenges marginalized voices, communities can achieve more equitable and effective service delivery.

5.5 Health Insurance

The qualitative and quantitative data highlights a significant gap in health insurance coverage among households in the targeted area. With the recent reinstatement of Sehat Card services by the newly elected provincial government of KP, ensuring 100% population coverage, the project will focus on raising awareness concerning micro insurance through outreach interventions of radio messages and print material

Here are some specific recommendations for intervention are proposed:

1. The project should expand awareness of health insurance programs through targeted campaigns and community outreach initiatives to generate demand. This will ensure that all deserving households are informed and encouraged to enroll, thereby becoming beneficiaries of health insurance coverage.
2. The project should advocate with policy-makers and relevant government departments for the expansion of health insurance services to cover the target districts of Mohmand and Khyber. This advocacy aims to promote policy changes and allocate resources to extend health insurance coverage to underserved areas.
3. The project should facilitate linkages between deserving households and the relevant government departments to streamline the process of accessing health insurance services. By establishing effective communication channels, eligible households can easily navigate the bureaucracy and obtain the necessary support to enroll in health insurance programs.

To effectively reach the most deserving households for microinsurance, it is recommended to collaborate with the Benazir Income Support Program (BISP) office at each district level. BISP officials possess comprehensive information regarding the poorest and most deserving households, and are willing to collaborate to facilitate outreach efforts and ensure maximum coverage of health insurance among vulnerable populations.

Conclusion

This feasibility study conducted for the HELP-CAMP project in Khyber Pakhtunkhwa's merged districts offers a nuanced understanding of the socio-economic challenges and opportunities within these districts. The analysis, conducted by the Sustainable Development Policy Institute (SDPI), underscores a multifaceted strategy aimed at enhancing social protection, economic empowerment, and community resilience in the face of longstanding disparities exacerbated by historical neglect, natural disasters and conflict susceptibility.

The merged districts of Khyber and Mohmand, marked by a complex security environment and developmental deficits, present unique challenges that demand tailored intervention strategies. The study identifies these challenges through rigorous quantitative and qualitative methodologies, including surveys, focus group discussions, and stakeholder interviews, ensuring a robust data collection framework that captures the socio-economic dynamics at play. In addition, the proposed project's relevance, coherence, sustainability, and effectiveness are validated through two frameworks: the theory of change and OECD DAC criteria. Supporting evidence from related literature, government policy documents, and field surveys confirms these attributes.

Strategic Alignment and Relevance: The study recommends interventions that align with the community's urgent needs by emphasizing social mobilization, livelihood creation, and empowering marginalized groups, particularly women and youth. These interventions target the key concerns highlighted during data collection. These interventions are not only relevant but also essential for initiating sustainable development in regions that have historically been left behind.

The relevance of these interventions is further validated by their alignment with national strategies and the Sustainable Development Goals. The emphasis on enhancing agricultural productivity, improving health services, and fostering educational and vocational training opportunities for youth mirrors the priorities set forth by the government of Khyber Pakhtunkhwa and international development frameworks.

Implementation Strategies, Conflict Sensitivity and Do No Harm: The study highlights the importance of a conflict-sensitive approach to program implementation. Given the volatile security situation and the presence of tribal and cultural complexities, interventions must be designed with a clear understanding of the local context. The project adopts the Do No Harm principle, ensuring that initiatives do not inadvertently exacerbate existing conflicts or tensions within the communities.

This approach is critical not only for the ethical execution of the project but also for its effectiveness and sustainability. By incorporating local norms and values into the planning and execution phases, and by engaging with local elders and community organizations, the project fosters a sense of ownership and commitment among the community members, which is vital for the long-term success of the interventions.

Community Engagement and Empowerment: The project's strategy should prioritize empowering local communities by establishing and reinforcing community organizations. This approach aims to bolster these groups' ability to advocate for their rights and needs, ensuring that interventions are community-driven, thus increasing their relevance and effectiveness.

Moreover, the focus on empowering women through economic initiatives and ensuring their participation in decision-making processes will address the significant gender disparities present in these districts. Providing women with vocational training, management, and access to microfinance is feasible and likely to enhance their economic status while also supporting broader gender equality goals.

Sustainability and Long-term Impact: The feasibility study confirms that the project's sustainability is secured by aligning economic, social, and environmental objectives. It proposes establishing sustainable practices in agriculture and livestock rearing to enhance livelihoods and conserve local resources. Additionally, the focus on developing local capacities and forming robust partnerships with governmental and non-governmental organizations ensures that the initiatives deliver enduring benefits beyond the project's duration.

Challenges and Recommendations: The feasibility study acknowledges that the project encounters challenges such as logistical constraints, political instability, and potential community resistance. It suggests implementing continuous monitoring and adaptive management to maintain intervention flexibility and responsiveness to evolving conditions. Additionally, establishing clear communication channels and regular feedback mechanisms is critical for addressing issues during implementation, ensuring the project stays on course and meets its objectives.

In conclusion, the HELP-CAMP project is well-positioned to significantly impact local communities in Khyber Pakhtunkhwa by focusing on social protection, economic empowerment, and resilience. With an emphasis on conflict sensitivity, community engagement, and sustainability, this initiative could set a precedent for future efforts. Ongoing commitment from all stakeholders, strategic oversight, and adaptive management are essential to address challenges and maximize the project's potential.

CAMP's extensive experience in the region, combined with promising intervention strategies, is likely to enhance the project's success and improve the social protection system for the targeted population. Nevertheless, the project's success also depends on collaborative efforts from various stakeholders. Continued support from the network of community organizations and government departments is critical for the program's longevity. By collaborating, these stakeholders can enable sustainable social and economic development in the merged districts.

Bibliography

- Abdul, H., Shahnaz, A., & Muhammad, I. (2021). Livelihood Assets and Outcomes of Rural Farm Households in Central Khyber Pakhtunkhwa of Pakistan. *Journal of Applied Economics and Business Studies*, 5(3), 532.
- Alcock, C., Daly, G., & Griggs, E. (2014). Ideology, the state and welfare in Britain. In *Introducing Social Policy* (pp. 184-207). Routledge.
- Asfaw, A., Simane, B., Bantider, A., & Hassen, A. (2019). Determinants in the adoption of climate change adaptation strategies: evidence from rainfed-dependent smallholder farmers in north-central Ethiopia (Woleka sub-basin). *Environment, Development and Sustainability*, 21(5), 2535-2565.
- Barrientos, A. (2011). Social protection and poverty. *International Journal of Social Welfare*, 20, 240-249.
- Government of Punjab. (2021). Punjab Social Protection Authority.
- Ip, C. Y., Liang, C., Lai, H. J., & Chang, Y. (2020). Determinants of social entrepreneurial intention: an alternative model based on social cognitive career theory. *Nonprofit Management and Leadership*, 31(4), 737-760. <https://doi.org/10.1002/nml.21453>
- Khwaja, A. (2002). Can good projects succeed in bad communities? collective action in the Himalayas. *SSRN Electronic Journal*. <https://doi.org/10.2139/ssrn.295571>
- Minckas, N., Shannon, G., & Mannell, J. (2020). The role of participation and community Mobilization in preventing violence against women and girls: a programme review and critique. *Global Health Action*, 13(1), 1775061. <https://doi.org/10.1080/16549716.2020.1775061>
- Osabohien, R., Onanuga, O. T., Aderounmu, B., Matthew, O. A., & Osabuohien, E. (2020). Social protection and employment in Africa's agricultural sector. *Business: Theory and Practice*, 21(2), 494-502. <https://doi.org/10.3846/btp.2020.11945>
- Shrestha, K. K. and McManus, P. (2007). The embeddedness of collective action in nepalese community forestry. *Small-Scale Forestry*, 6(3), 273-290. <https://doi.org/10.1007/s11842-007-9020-4>
- Syed M. Muddassir Abbas Naqvi, Hazoor Muhammad Sabir, Anisa Shamim, & Muhammad Tariq. (2014). Social Safety Nets and Poverty in Pakistan (A Case Study of BISP in Tehsil Mankera District Bhakkar). *Journal of Finance and Economics*, 2(2), 44-49. doi: 10.12691/jfe-2-2-1.
- UNDP. (2019). Human Development Report 2019: Beyond Income, Beyond Averages, Beyond Today - Inequalities in Human Development in the 21st Century.
- World Bank. (2021). Poverty headcount ratio at national poverty lines (% of population) - Pakistan. Retrieved from [URL]